

DOTD FORM: 24-102

PROPOSAL TO PROVIDE CONSULTANT SERVICES

(Revised January 1, 2023)

Prime consultant shall complete the DOTD Form 24-102 without altering the Form's text; however, the instruction and/or guidance for Sections 12 through 23 can be removed but do not remove Section title and number.

ANY CONSULTANT FAILING TO SUBMIT ANY OF THE INFORMATION REQUIRED ON THE DOTD FORM 24-102, OR PROVIDING INACCURATE INFORMATION ON THE DOTD FORM 24-102, MAY BE CONSIDERED NON-RESPONSIVE.

1. Contract Name as shown in the advertisement	<i>Doucet Road Sidewalks, Lafayette Parish</i>
2. Contract Number(s) as shown in the advertisement	<i>Contract No. 4400027760</i>
3. State Project Number(s), if shown in the advertisement	<i>H.014509.5</i>
4. Prime consultant name (name must match as registered with the Louisiana Secretary of State where such registration is required by law)	<i>Meyer Engineers, Ltd.</i>
5. Prime consultant license number (as registered with the Louisiana Professional Engineering and Land Surveying Board (LAPELS) if registration is required under Louisiana law)	<i>EF.0000562 DUNS #043959022</i>
6. Prime consultant mailing address	<i>P.O. Box 763 Metairie, LA 70004</i>
7. Prime consultant physical address (existing or to be established, if location is used as an evaluation criteria)	<i>4937 Hearst Street, Suite 1B Metairie, LA 70001</i>
8. Name, title, phone number, and email address of prime consultant's contract point of contact	<i>David H. Dupre, Vice President Phone: 504.885.9892 Email: ddupre@meyer-e-l.com</i>
9. Name, title, phone number, and email address of the official with signing authority for this proposal	<i>Richard C. Meyer, President Phone: 504.885.9892 Email: rickmeyer@meyer-e-l.com</i>

10. This is to certify that all information contained herein is accurate and true, and that the team presently has sufficient staff to perform these services within the designated time frame. By submitting this proposal, proposer certifies that it is not engaged in a boycott of Israel and it will, for the duration of its contract obligations, refrain from a boycott of Israel. Proposer also certifies and agrees that the following information is correct: In preparing its response, the proposer has considered all proposals submitted from qualified, potential subcontractors and suppliers, and has not, in the solicitation, selection, or commercial treatment of any subcontractor or supplier, refused to transact or terminated business activities, or taken other actions intended to limit commercial relations, with a person or entity that is engaging in commercial transactions in Israel or Israeli-controlled territories, with the specific intent to accomplish a boycott or divestment of Israel. The proposer also has not retaliated against any person or other entity for reporting such refusal, termination, or commercially limiting actions. DOTD reserves the right to reject the response of the bidder or proposer if this certification is subsequently determined to be false, and to terminate any contract awarded based on such a false response.



Signature above shall be the same person listed in Section 9:

Date: August 29, 2023

11. If a Disadvantaged Business Enterprise (DBE) goal has been set for this advertisement, indicate which firm(s) will be used to meet the DBE goal and each firm(s)' percentage.

Firm(s):
N/A

Firm(s)' %:

12. Past Performance Evaluation Discipline Table:

Past Performance Evaluation Discipline(s)	% of Overall Contract	Prime <i>Meyer Engineers, Ltd.</i>	Firm C <i>SJB Group, LLC</i>	Each Discipline must total to 100%
<i>Road</i>	<i>90%</i>	<i>100%</i>		<i>100%</i>
<i>Survey</i>	<i>10%</i>		<i>100%</i>	<i>100%</i>
Identify the percentage of work for the overall contract to be performed by the prime consultant and each sub-consultant.				
Percent of Contract	<i>100%</i>	<i>90%</i>	<i>10%</i>	<i>100%</i>

13. Firm Size:

Firm name	DOTD Job Classification	Number of personnel committed to this contract	Total number of personnel available in this DOTD Job Classification (if needed)
<i>Meyer Engineers, Ltd.</i>			
<i>Meyer Engineers, Ltd.</i>	<i>Accountant</i>	<i>1</i>	<i>3</i>
<i>Meyer Engineers, Ltd.</i>	<i>Administrative</i>	<i>1</i>	<i>1</i>
<i>Meyer Engineers, Ltd.</i>	<i>Clerical</i>	<i>1</i>	<i>3</i>
<i>Meyer Engineers, Ltd.</i>	<i>Engineer</i>	<i>3</i>	<i>9</i>
<i>Meyer Engineers, Ltd.</i>	<i>Engineer Intern</i>	<i>0</i>	<i>2</i>
<i>Meyer Engineers, Ltd.</i>	<i>Inspector</i>	<i>0</i>	<i>4</i>
<i>Meyer Engineers, Ltd.</i>	<i>Inspector – Certified</i>	<i>0</i>	<i>4</i>
<i>Meyer Engineers, Ltd.</i>	<i>Inspector – Lead</i>	<i>0</i>	<i>1</i>
<i>Meyer Engineers, Ltd.</i>	<i>Planner</i>	<i>0</i>	<i>1</i>
<i>Meyer Engineers, Ltd.</i>	<i>Principal</i>	<i>1</i>	<i>1</i>
<i>Meyer Engineers, Ltd.</i>	<i>Supervisor – Engineer</i>	<i>1</i>	<i>2</i>
<i>SJB Group, LLC</i>			
<i>SJB Group, LLC</i>	<i>Accountant</i>	<i>0</i>	<i>2</i>
<i>SJB Group, LLC</i>	<i>Administrative</i>	<i>0</i>	<i>3</i>
<i>SJB Group, LLC</i>	<i>CADD Operator</i>	<i>1</i>	<i>2</i>
<i>SJB Group, LLC</i>	<i>Engineer</i>	<i>0</i>	<i>4</i>
<i>SJB Group, LLC</i>	<i>Instrument Man</i>	<i>0</i>	<i>4</i>
<i>SJB Group, LLC</i>	<i>Landscape Architect</i>	<i>0</i>	<i>1</i>
<i>SJB Group, LLC</i>	<i>Party Chief</i>	<i>3</i>	<i>6</i>
<i>SJB Group, LLC</i>	<i>Principal</i>	<i>1</i>	<i>1</i>
<i>SJB Group, LLC</i>	<i>Professional</i>	<i>0</i>	<i>2</i>
<i>SJB Group, LLC</i>	<i>Senior Technician</i>	<i>2</i>	<i>4</i>
<i>SJB Group, LLC</i>	<i>Supervisor – Engineer</i>	<i>0</i>	<i>1</i>
<i>SJB Group, LLC</i>	<i>Supervisor – Other</i>	<i>1</i>	<i>2</i>
<i>SJB Group, LLC</i>	<i>Surveyor</i>	<i>1</i>	<i>1</i>
<i>SJB Group, LLC</i>	<i>Technician</i>	<i>0</i>	<i>1</i>

14. Organizational Chart:

MEYER ENGINEERS, LTD.



Department of Transportation & Development

Principal-In-Charge
Richard C. Meyer, P.E., Civil Engineer

Civil Engineers
Mark A. Schutt, P.E. (Lead)
Ann M. Theriot, P.E.
Eric Colwart, P.E.
Tyler Gettys, P.E.

Project Manager/Civil Engineer
David H. Dupre, P.E.

Quality Control
Jitendra C. Shah, P.E.

Topographic Surveying

Matthew Estopinal, PE, PLS
Tim Brewer, RF, PS, PLS, RPLS, RPP
Elvis Nguyen
Philip Dowden
Tuesdie Savoy
Daniel Biggs
C. Paul Young

15. Minimum Personnel Requirements:

MPR No. Do not insert wording from ad	Personnel being used to meet the MPR (Individual(s) may not satisfy more than one MPR unless specifically allowed by Attachment B of the advertisement)	Firm employed by	Type of license and discipline meeting MPR/ certification & number (Ex: PE # - Civil)	State of license	License / certification expiration date
<i>1</i>	<i>Richard C. Meyer, P.E.</i>	<i>Meyer Engineers, Ltd.</i>	<i>Professional Civil Engineer / 24012</i>	<i>LA</i>	<i>03/31/2024</i>
<i>2</i>	<i>Jitendra C. Shah, P.E.</i>	<i>Meyer Engineers, Ltd.</i>	<i>Professional Civil Engineer / 19551</i>	<i>LA</i>	<i>03/31/2025</i>
<i>3</i>	<i>David H. Dupre, P.E.</i>	<i>Meyer Engineers, Ltd.</i>	<i>Professional Civil Engineer / 23422</i> <i>Traffic Control Supervisor</i> <i>Flagger</i>	<i>LA</i>	<i>03/31/2024</i> <i>03/12/2025</i> <i>08/04/2025</i>
<i>4</i>	<i>Matt Estopinal, PLS</i>	<i>SJB Group, LLC</i>	<i>Professional Engineer / 39151</i> <i>Professional Land Surveyor / 4955</i>	<i>LA</i>	<i>03/31/2025</i> <i>03/31/2025</i>

16. Staff Experience:

Firm employed by: <i>Meyer Engineers, Ltd</i>				
Name	<i>Richard C. Meyer, P.E.</i>		Years of relevant experience with this employer	42
Title	<i>Principal-in-Charge</i>		Years of relevant experience with other employer(s)	0
Degree(s) / Years / Specialization		<i>B.S. Civil Engineering 1980, Tulane University</i>		
Active registration number / state / expiration date		<i>24012 / LA / 03-31-2024</i>		
Year registered	<i>1988</i>	Discipline	<i>Civil Engineering</i>	
Contract role(s) / brief description of responsibilities		<i>Project Principal / Oversee Project / Meets MPR No. 1</i>		
Experience dates (mm/yy–mm/yy)	Experience and qualifications relevant to the proposed contract; <i>i.e.</i> , “designed drainage”, “designed girders”, “designed intersection”, etc. Experience dates should cover the years of experience specified in the applicable MPR(s).			
Richard C. Meyer is involved with all aspects of administering engineering projects including client contact, cost estimates, design, contract administration, and contract closeout. He coordinates the engineering staff and has participated in most facets of civil engineering design including <i>bicycle/pedestrian systems</i> , structural, sanitary and storm sewerage, drainage, roads and bridges, and airport designs. He is knowledgeable of DOTD’s “Roadway Design Manual”, “Testing Procedures Manual”, “Sampling Manual”, “Bridge Manual”, and “Engineering Directives and Standards Manual”. As Project Engineer for Federal Aid System Projects, he has administered assistants, certified inspectors, and field representatives for the construction of asphalt concrete and portland cement concrete roadways and drainage systems for over ten years. The work included interpreting contract documents, preparing pay requests and change orders, and coordination with Federal, State, and Parish Representatives. He is a member of the Louisiana Engineer’s Society, the American Society of Civil Engineers, the American Concrete Institute, National Society of Professional Engineers, and the Louisiana Floodplain Managers Association.				
<i>11/14-09/19 (Ph. 1) 05/18-07/20 (Ph. 2)</i>	<i>State Project Nos. H.002263 & H.009753: Lafitte Sidewalks Phase 1 & 2: Project Principal for the design, construction engineering, and resident inspection for the Lafitte Sidewalk Projects. Phase 1 consisted of 1,100 linear feet of 5-foot wide concrete sidewalks along Treasure Street. Phase 2 consisted of 1,600 linear feet of 5’ and 8’ wide concrete sidewalks along Treasure Street, Church Street, and LA 302. The work also included landscaping, curbs, drainage, striping, and ADA ramps.</i>			
<i>11/15-12/18</i>	<i>State Project No. H.011857: Wisner Boulevard Shared Use Path, Orleans Parish: Project Principal for the design of the 10’ wide concrete path for bicycles and pedestrians along Wisner Boulevard. The path is on the Bayou St. John side of Wisner Boulevard and begins at the termination of the existing bike path, north of I-610 and ends at Esplanade Avenue. The project included coordination and design striping for street crossings of the shared use path along Bayou St. John and the implementation of future traffic signals. Meyer coordinated with the City of New Orleans Public Works, New Orleans Traffic Engineering, Regional Planning Commission, DOTD District 02, and New Orleans City Park Officials. Construction Cost: \$410K (LADOTD TAP Funded Project)</i>			
<i>01/16-06/20</i>	<i>State Project No. H.011835: Washington Parish Sidewalks, Washington Parish: Project Principal for the design of 4,000 LF of 6-foot-wide decorative concrete sidewalks along Cleveland Street, Main Street (LA 25), Washington Street (LA 10), Pearl Street and Jackson Street. The sidewalks provide a non-motorized transportation link in the community and tie into the Safe Routes to School project around Franklinton Junior High. Future phases to extend the path along Main Street (LA 25) and along Boat Ramp Road are in the conceptual design phase. The project provided connectivity between residential neighborhoods and established commercial areas and government services. Construction Cost: \$345K (LADOTD TAP Funded Project)</i>			
<i>06/13-07/18</i>	<i>State Project H. 010184: LA 59: Curve Realign and Tunnel at Trace, St. Tammany Parish: Project Principal for the design of the LA 59 curve realign which includes flattening the horizontal curves of LA 59 at the existing dangerous “S” curve as the road crosses the Trace. Other improvements include drainage improvements (open ditch and subsurface), utility relocations, and raising the grade of the road two feet for the tunnel. This portion of the project is paid for under the Highway Safety Improvement Program (HSIP). Work also included construction of a pedestrian tunnel under LA 59. The tunnel work included a 14’ x 10’ box culvert, approach ramps, sump pump, wet well, waterproofing, and vandal resistant lighting. This portion of the project was funded through the Transportation Alternatives Program (TAP). Construction Cost: \$6M</i>			



Firm employed by: <i>Meyer Engineers, Ltd.</i>				
Name	<i>David H. Dupre, P.E.</i>		Years of relevant experience with this employer	35
Title	<i>Civil Engineer/Construction Administration</i>		Years of relevant experience with other employer(s)	3
Degree(s) / Years / Specialization			<i>B.S. Civil Engineering 1984, Louisiana State University</i>	
Active registration number / state / expiration date			<i>23422/LA/03-31-2024</i>	
Year registered	<i>1989</i>	Discipline	<i>Civil Engineering</i>	
Contract role(s) / brief description of responsibilities			<i>Program Manager / Meets MPR No. 2</i>	
Experience dates (mm/yy–mm/yy)	Experience and qualifications relevant to the proposed contract; <i>i.e.</i> , “designed drainage”, “designed girders”, “designed intersection”, etc. Experience dates should cover the years of experience specified in the applicable MPR(s).			




David H. Dupre is a Principal and a Professional Civil Engineer, registered in the State of Louisiana. He will provide **construction administration support**. He is involved with all aspects of administering engineering projects which include client contact, cost estimates, design, quality control, construction administration, preparation of reports, plans and specifications. He participates in most facets of Civil Engineering design including roads, bridges, drainage, sanitary sewer, water and structural. He was the 2020-2021 former **Chairman of the Board** of the **American Council of Engineering Companies Louisiana (ACECL)**. He was also the former New Orleans Chapter President. In 2016, he was honored in receiving the **Outstanding Civil Engineer** award from the New Orleans Branch of the **ASCE**. He is also a member of SAME, ASCE, APWA, CMAA and LES. He has designed projects in accordance with DOTD’s “Roadway Design Manual”, “Hydraulics Manual”, “Bridge Manual”, “Complete Streets Manual”, and the “Louisiana Standard Specification for Roads and Bridges”. He is certified in Local Public Agency Qualification Core Training, **Construction Engineering and Inspection (CE&I) Training**, Project Planning, Feasibility & Application Workshop, Project Design and Delivery Training. He completed the Designing Streets for Pedestrian & Bicycle Safety Workshop. He is a **LADOTD certified Traffic Control Supervisor and Flagger**.

<i>11/15-12/18</i>	State Project No. H.011857: Wisner Boulevard Shared Use Path, Orleans Parish: Project Manager for the design of the 10’ wide concrete path for bicycles and pedestrians along Wisner Boulevard. The path is on the Bayou St. John side of Wisner Boulevard and begins at the termination of the existing bike path, north of I-610 and ends at Esplanade Avenue. The project included coordination and design striping for street crossings of the shared use path along Bayou St. John and the implementation of future traffic signals. He coordinated with the City of New Orleans Public Works, New Orleans Traffic Engineering, Regional Planning Commission, DOTD District 02, and New Orleans City Park Officials. Construction Cost: \$410K (LADOTD TAP Funded Project)
<i>05/18-Present</i>	State Project No. H.013365: LA 45/LA 303 Rosethorne Path (Lafitte), Jefferson Parish: Project Manager for the design of a concrete sidewalk in upper Lafitte. This project is a LADOTD Transportation Alternatives Project (TAP) . The project includes 7,700 linear feet of 6’ wide sidewalk along an existing roadway. One of the challenges during design was crossing existing drop inlets with sidewalks. Drop inlets are typically not ADA compliant, but any drop inlet which fell within the footprint of the path was required to be compliant. Meyer created a design to modify the existing catch basins to bring them into compliance.
<i>06/13-07/18</i>	State Project H. 010184: LA 59: Curve Realign and Tunnel at Trace, St. Tammany Parish: Project Manager designing the LA 59 curve realign which includes flattening the horizontal curves of LA 59 at the existing dangerous “S” curve as the road crosses the Trace. Other improvements include drainage improvements (open ditch and subsurface), utility relocations, and raising the grade of the road two feet for the tunnel. This portion of the project is paid for under the Highway Safety Improvement Program (HSIP). Work also includes construction of a pedestrian tunnel under LA 59. The tunnel work includes a 14’ x 10’ box culvert, approach ramps, sump pump, wet well, waterproofing, and vandal resistant lighting. This portion of the project is funded through the Transportation Alternatives Program (TAP) . Construction Cost: \$6M

Meyer Engineers, Ltd. (David H. Dupre) – Continued

09/17-Present	Claiborne Corridor Streetscape Improvements, Orleans Parish: Project Manager who completed the Master Plan and the design for Phase I for the Claiborne Corridor. The 19-block corridor is on North Claiborne Avenue from Canal Street to St. Bernard Avenue, typically underneath the I-10 bridge. Elements of the Master Plan include urban streetscape, green infrastructure , landscaping with rain gardens, rainwater harvesting pools, skate park, picnic areas, world class marketplace with kiosks, performance stages with amphitheater seating, playgrounds, basketball courts, a four block pedestrian plaza , youth city hall, non-profit campus offices, outdoor café, restrooms, bike lanes, sidewalks , decorative light poles, demolition of the Esplanade I-10 ramp, and a roundabout.
02/18-01/24	State Project No. H.013525: 40 Arpent Trail, St. Bernard Parish: Project Manager for the design of a 10-foot wide asphalt multi-use path including striping, signage, and signals along the Forty Arpent Canal for approximately eight miles from Arabi near Alexander Avenue to the Violet Canal. The multi-use path was designed for walkers, joggers, bicyclists , skaters, and other non-motorized users. The project also includes two bicycle/pedestrian bridges across the canal at Val Riess Park and De Bouchel Boulevard. Construction Cost: \$7.9M
08/22-Present	State Project No. H.014939: Brown Avenue Multi-Use Path, Jefferson Parish: Project Manager who designed a 12' asphalt multi-use trail adjacent to the linear park. This multi-use path will connect this neighborhood to the West Bank's extensive bike/pedestrian path system . The multi-use path will connect to all linear park entrances allowing pedestrians to enter the park to enjoy the amenities or take a water break. The multi-use path is funded by the LADOTD Transportation Alternatives Program (TAP) . Construction Cost: \$1.1M (EST)
03/23-Present	Sharp Road (Florida Boulevard to Old Hammond Highway), East Baton Rouge Parish: Project Manager for a Design Study for the roadway improvements from Sharp Road which will include the design of subsurface drainage along both sides of the road, asphalt patching, roadway reconstruction, and asphalt mill and overlay of roadway surface. A sidewalk path is to be added on the north side of the roadway.
10/20-Present	Scenic Highway Corridor Enhancements (Harding to Swan), East Baton Rouge Parish: Project Manager assisting with the services for Phase I (Preliminary Engineering) of this enhancement project which proposes to enhance pedestrian, transit, and bicycle safety and mobility by improving the existing corridor to better accommodate the Complete Streets need in the area. Crosswalks will be provided at all intersections and pedestrian countdown signals at signalized intersections will also be considered. Construction Cost: \$5.5M (EST)
11/22-Present	State Project No. H.009724: St. James Mississippi East Bank Multi-Use Trail – Phase I, St. James Parish: Project Manager currently designing the multi-use path on the protected side of the Mississippi River. The project is primarily funded by the DOTD Transportation Alternatives Program (TAP) . The project is the first of multiple projects intended to provide a levee trail throughout the entirety of St. James Parish. Included in this project is a 10' multi-use path , open ditch and subsurface drainage, and embankment widening. Construction Cost: \$2.2M (EST)
10/12-06/13	LA Hwy. 21 – Bicycle and Pedestrian Improvements Feasibility Study (RPC Task MC 5-13), St. Tammany Parish: Project Manager for the LA Hwy. 21 Bicycle and Pedestrian Improvements. The study involved reviewing a large-scale residential development on large lots and accompanying retail and commercial development along rural roadways which resulted in widening projects to accommodate growth in traffic along LA 21 that acts as a major arterial corridor between Covington and Mandeville/Madisonville City limits in St. Tammany Parish. The Regional Planning Commission reviewed the LA 21 corridor to investigate enhancements to bicycle and pedestrian mobility and safety and to reduce congestion and improve air quality. Construction Cost: \$13.3M (All Alternatives)
04/22-03/24	State Project No. H.007559: St. John Westbank Mississippi River Trail – Phase II, St. John the Baptist Parish: Project Manager for the design of the 10' wide asphalt multi-use trail located on the crown of the levee. Design includes layout of the path on the levee crown, investigation of ramp locations, a pedestrian crossing on River Road, drainage, benches, signage, and striping . Construction Cost: \$2.3M

Firm Employed by: <i>Meyer Engineers, Ltd.</i>					
Name	<i>Jitendra C. Shah, P.E.</i>		Years of relevant experience with this firm/employer	39	
Title	<i>Quality Control</i>		Years of relevant experience with other firm(s)/employer(s)	11	
Degree(s) / Years / Specialization		<i>M.S. Civil Engineering 1975, Wayne State B.S. Civil Engineering, 1973, The Detroit Institute of Technology</i>			
Active registration number / state / expiration date		<i>19551 / LA / 03-31-2025</i>			
Year registered	<i>1981</i>	Discipline	<i>Civil Engineering</i>		
Contract role(s) / brief description of responsibilities		<i>Quality Assurance/Quality Control</i>			
Experience dates (mm/yy–mm/yy)	Experience and qualifications relevant to the proposed contract; <i>i.e.</i> , “designed drainage”, “designed girders”, “designed intersection”, etc. Experience dates should cover the years of experience specified in the applicable MPR(s).				
Jitendra C. Shah will perform Quality Control on this project and is involved with all aspects of administering engineering projects which include client contact, cost estimates, <i>design</i> , quality control, construction administration, and contract closeout, preparation of reports and plans and specifications. He participates in most facets of Civil Engineering design including structural, sanitary and storm sewerage, water, sidewalks, drainage, <i>roads and bridges</i> , and airport designs. He has completed the DOTD/RPC sponsored course “Designing Streets for Pedestrian & Bicycle Safety. He has completed the FHWA and DOTD sponsored course on Stream Stability and Scour at Highway Bridges. He is an Associate Member of the Institute of Transportation Engineers, and a member of the American Society of Civil Engineers and the Louisiana Engineering Society.					
<i>05/08-10/12</i>	<i>Mandeville Pedestrian West Side Connection, St. Tammany Parish:</i> Project Engineer for the design of the Mandeville Pedestrian West Side Connection for the City of Mandeville. The project begins at W. Causeway Approach, runs along Mandeville Highway, through Chinchuba Oaks Subdivision, crossing Bayou Chinchuba and connecting to the sidewalk at Monroe Street on the west side of the N. Causeway Approach. The work consisted of a 5,000 LF bike path , including a 200 LF bridge crossing , concrete sidewalks , drainage, and landscaping improvements. He coordinated with numerous agencies including Mandeville’s Department of Public Works, and the Causeway Commission. Construction Cost: \$1.8M				
<i>03/15-09/17</i>	<i>State Project No. H.011855: West Causeway Approach Pathway, St. Tammany Parish:</i> Provided quality control on the West Causeway Approach Pathway in Mandeville. The project included 6,600’ of 10’ wide asphalt bicycle/pedestrian path along the northeast right-of-way on West Causeway Approach and extended from Moores Road to Shadow Oaks Lane. The project was funded in part by DOTD through the Transportation Alternatives Program (TAP) , therefore plans and construction were in accordance with DOTD requirements. Construction Cost: \$803K				
<i>01/18-Present</i>	<i>Holmes Boulevard Rehabilitation (Browning Lane to Behrman Highway), Jefferson Parish.</i> Project Manager for the Holmes Boulevard Rehabilitation Project. The project consists of removing and replacing the existing two lane undivided concrete roadway and adding a 6’ foot continuous shoulder/bike lane on either side of Browning Lane to Behrman Highway. The six foot continuous shoulder on each side serves as a bike lane and was constructed using a 10” pervious concrete section 4.5 feet wide with a 1.5 foot wide barrier curb and gutter of standard concrete for a total width of 6’ feet. A 3’ foot mountable curb island is to be used to separate the bike lane from the automobile travel lanes . Construction Cost: \$5.8M (EST)				
<i>11/14-05/18</i>	<i>S. Galvez Street (Toledano Street to Martin Luther King Boulevard, Orleans Parish:</i> Project Manager for the design of the reconstruction of S. Galvez from Toledano Street to Martin Luther King Boulevard (approximately 1,800 feet). The construction of the concrete roadway included two 12-foot-wide traveling lanes and 8’ parking lane in each direction separated by a median. Additional features included curbs, new traffic signals, subsurface drainage, water line, sewer line, and street lighting replacement. Construction Cost: \$5.5M				
<i>01/19-Present</i>	<i>Destrehan Avenue Bike Path, Jefferson Parish:</i> Project Manager currently designing a bike path on Destrehan Avenue on the Westbank of Jefferson Parish. The first phase includes a concrete path from 4th Street to the Westbank Expressway and a new striped bike path with restriping of Destrehan Avenue from Westbank Expressway to Patriot Street. The second phase has a new striped bike path with restriping of Destrehan Avenue from Patriot Street to the turn of Destrehan Avenue near Lapalco Boulevard, and a concrete bike path from the turn to Chadwood Drive. Construction Cost: \$2.7M (Ph. 1) & \$3.3M (Ph. 2) (EST)				
<i>08/18-Present</i>	<i>Oakwood Smart Growth – Holmes Boulevard, Jefferson Parish:</i> Project Manager for the design of a new brick paver sidewalk around the Oakwood Mall and upgrading multiple traffic signals to allow for new crosswalks . The project also includes replacing all the driveways that the sidewalk crosses and miscellaneous utility relocations.				

Firm employed by: <i>Meyer Engineers, Ltd.</i>				
Name	<i>Mark A. Schutt, P.E.</i>		Years of relevant experience with this firm/employer	<i>24</i>
Title	<i>Civil Engineer</i>		Years of relevant experience with other firm(s)/employer(s)	<i>2</i>
Degree(s) / Years / Specialization		<i>M.S. Civil Engineering, 1999, Tulane University</i> <i>B.S. Civil Engineering, 1997, Tulane University</i>		
Active registration number / state / expiration date		<i>30528 / LA / 03-31-2025</i>		
Year registered	<i>2003</i>	Discipline	<i>Civil Engineering</i>	
Contract role(s) / brief description of responsibilities		<i>Lead Project Engineer</i>		
Experience dates (mm/yy–mm/yy)	Experience and qualifications relevant to the proposed contract; <i>i.e.</i> , “designed drainage”, “designed girders”, “designed intersection”, etc. Experience dates should cover the time specified in the applicable MPR(s).			
<p>Mark A. Schutt performs Civil Engineer design for the firm. This includes client contact, cost estimates, design, construction administration, preparation of reports, plans and specifications, and computer programming as needed. While with other firms he conducted extensive research on pile-supported approach slabs. He has designed projects in accordance with DOTD’s “Roadway Design Manual”, “Hydraulics Manual”, “Bridge Manual”, AASHTO’s “Green Book” and the “Louisiana Standards and Specifications for Roads and Bridges”. He is a member of the Louisiana Engineer’s Society of Civil Engineers, and the National Society of Professional Engineers. He attended DOTD’s CADconform and ControlCAD Indexer seminars.</p>				
<i>01/22-Present</i>	<i>State Project No. H.014913: LA 25: Washington Parish Sidewalks, Segment A, Washington Parish:</i> Project Engineer for the design of an estimated 3,200 LF of 5’ wide decorative sidewalk along Main Street (LA 25) and an estimated 1,500 LF of 7’ wide decorative concrete sidewalk along Cleveland Street in Franklinton. The project will tie into the Safe Routes to School project around Franklinton Junior High School. Construction Cost: \$491K (EST) (LADOTD TAP Funded)			
<i>06/13-Present</i>	<i>State Project No. H.010184: LA 59: Curve Realign and Tunnel at Trace, St. Tammany Parish:</i> Project Engineer designing the road, geometry, and drainage for LA 59: Curve Realign and Tunnel at Trace project. Improvements included flattening the radius of LA 59 at the existing dangerous “S” curve as the road crosses the trace. Other improvements included drainage, utility relocations, and raising the grade of the road two feet for the tunnel. This portion of the project is paid for under the Highway Safety Improvement Program (HSIP). Work also includes construction of a pedestrian tunnel under LA 59. The tunnel work includes a 14’ x 10’ box culvert, approach ramps, sump pump, wet well, waterproofing, and vandal resistant lighting. This portion of the project is funded through the Transportation Alternatives Program (TAP) . Construction Cost: \$3.6M (EST)			
<i>06/10-05/18</i>	<i>State Project No. H.009770: St. John Mississippi River Trail – Phase I-IV, St. John the Baptist Parish:</i> Lead Project Engineer on all four phases of this project. A 10’ wide asphalt trail on the Mississippi River Levee from the St. Charles Parish line to the St. James Parish line. The work also includes drainage, a ramp, a pedestrian crossing on River Road, signage, and striping. Construction Costs: \$7.2M (All Phases) (LADOTD TAP Funded)			
<i>01/16-07/19</i>	<i>State Project No. H.011835: Washington Parish Sidewalk Improvements, Washington Parish:</i> Project Engineer for the design which consisted of 4,000 linear feet of 6-foot-wide decorative concrete sidewalks . The sidewalks provide a non-motorized transportation link in the community and will tie into the Safe Routes to School Project around the Franklinton Junior High School. Future phases to extend the path along Main Street (LA 25) and along Boat Ramp Road are in conceptual design phase. The project provides connectivity between residential neighborhoods and established commercial areas and government services. This project is being funded in part by DOTD through the Transportation Alternatives Program (TAP) . He coordinated with DOTD as well as Washington Parish. Construction Cost: \$345K (EST)			
<i>01/01-02/05</i>	<i>State Project No. 744-52-0023: Jackson Avenue Bike Path, St. Tammany Parish:</i> Project Engineer for the design which included 4,000 LF of a 10’ wide asphalt bike path, an 80’ long timber bridge , asphalt overlay of Jackson Avenue, 1,000 LF of concrete sidewalk , and drainage. Also included was the beautification of the Jackson Avenue Harbor area. The work included creating green spaces by removing pavement, constructing curbs, crosswalks, ADA compliant ramps , placing fill and sod. Under this DOTD Alternatives Project , he coordinated with DOTD District 62, DOTD in Baton Rouge, and the City of Mandeville’s Administration. Construction Cost: \$539K			
<i>03/15-09/17</i>	<i>State Project No. H.011855: W. Causeway Approach Pathway, St. Tammany Parish:</i> Project Engineer for the design of the 6,600’ 10’ wide asphalt bicycle/pedestrian path along the northeast right-of-way on West Causeway Approach and extending from Moores Road to Shadow Oaks Lane. The project included new drainage culverts, culvert extensions, driveway replacements, signing, and striping. Also included was a 92’ long wooden boardwalk . Construction Cost: \$803K (LADOTD TAP Funded)			






Firm Employed by: <i>Meyer Engineers, Ltd.</i>				
Name	<i>Ann M. Theriot, P.E.</i>		Years of relevant experience with this firm/employer	33
Title	<i>Civil Engineer</i>		Years of relevant experience with other firm(s)/employer(s)	2
Degree(s) / Years / Specialization		<i>B.S. Civil Engineering, 1987, Louisiana State University</i>		
Active registration number / state / expiration date		<i>25155 / LA / 09-30-2023</i>		
Year registered	<i>1987</i>	Discipline	<i>Civil Engineering</i>	
Contract role(s) / brief description of responsibilities		<i>Civil Engineer</i>		
Experience dates (mm/yy–mm/yy)	Experience and qualifications relevant to the proposed contract; <i>i.e.</i> , “designed drainage”, “designed girders”, “designed intersection”, etc. Experience dates should cover the years of experience specified in the applicable MPR(s).			
Ann M. Theriot is involved in many aspects of engineering projects, which include preparation of reports, plans and specifications. Ann M. Theriot also has experience in the design of <i>bicycle/pedestrian systems, roadways</i> , levees and parking lots, sanitary sewer systems, subsurface drainage systems, and water systems; drainage analysis, calculations of project quantities, cost estimates and writing job specifications.				
<i>03/22-Present</i>	<i>State Project No. H.014650: Lafitte Levee Path – City Park Street to Fleming Canal, Jefferson Parish:</i> Project Engineer completing the design for a <i>path</i> that shall extend along the levee top from the levee top trail near the boardwalk, located at the end of City Park Drive, and extend to the access path along the south side of Fleming Canal. Work includes an approximately <i>1,700’ long by 6’ wide, 6” concrete path</i> , site preparation and signage. Construction Cost: \$1.2M (EST) (<i>LADOTD TAP Funded</i>)			
<i>03/13-02/14</i>	<i>Severn Avenue Corridor Improvements (RPC Task A-1.13), Jefferson Parish:</i> Project Engineer for the Severn Avenue Corridor <i>Study</i> which <i>fosters connectivity</i> and provides a <i>complete streets approach emphasizing pedestrian, bicycle and transit access, and safety</i> along Severn Avenue from W. Esplanade to Veterans Blvd. Information was gathered regarding existing utilities, land use and traffic. Once this information was analyzed and field visits were completed, conceptual designs were presented. A <i>Stage 0 Feasibility Study</i> was completed so the Regional Planning Commission (RPC) could move forward with securing funding for the selected alternative. The selected alternate included <i>8’ wide sidewalks, bike lanes</i> , landscaping, decorative pavement, <i>pedestrian cross signals</i> , and major drainage improvements. Ms. Theriot <i>coordinated with</i> the RPC, Jefferson Parish Engineers and Planners, Jefferson Parish President, and Councilman, <i>DOTD</i> , JEDCO and the Project Management Committee. Construction Cost \$2.9M			
<i>11/14-09/19 (Ph. 1) 05/18-07/20 (Ph. 2)</i>	<i>State Project Nos. H.002263 & H.009753: Lafitte Sidewalks Phase 1 & 2:</i> Project Engineer for the design, construction engineering, and resident inspection for the Lafitte Sidewalk Projects. Phase 1 consisted of <i>1,100 linear feet of 5-foot wide concrete sidewalks</i> along Treasure Street. Phase 2 consisted of <i>1,600 linear feet of 5’ and 8’ wide concrete sidewalks</i> along Treasure Street, Church Street, and LA 302. The work also included landscaping, curbs, drainage, striping, and ADA ramps.			
<i>07/15-11/15</i>	<i>Veterans Boulevard Corridor (Virginia Street – Belleview Boulevard, Infrastructure Assessment Jefferson Parish:</i> Project Engineer for the design of a <i>Master Plan for the infrastructure needs</i> along Veterans Boulevard from near Loyola Boulevard to Williams Boulevard. In anticipation of the massive redevelopment of the Louis Armstrong New Orleans International Airport, City of Kenner Officials were concerned with the increased <i>infrastructure needs of this corridor</i> . She performed field investigations and developed an inventory of the various infrastructure systems existing within the study area. A key part of the planning effort was evaluating each system to reflect the likely need for capacity-related improvements based on anticipated development resulting from the Airport’s new north terminal. Infrastructure analyzed included streets, <i>sidewalks</i> , drainage, signage, beautification, water, sewer, electrical, cable and natural gas. Construction Cost: \$6.1M			
<i>11/11-12/12</i>	<i>Mandeville Bicycle/Pedestrian Master Plan, St. Tammany Parish:</i> Project Engineer for the <i>Mandeville Bicycle/Pedestrian Master Plan</i> for the City of Mandeville which provided <i>alternative transportation features</i> . The Master Plan suggested routes such as <i>bicycle and pedestrian routes</i> , improvements necessary for these routes and prioritized construction of these routes. The Master Plan was based on general trail characteristics outlined in <i>AASHTO’s “Guide for the Development of Bicycle Facilities”</i> and RPC’s sponsored course <i>“Designing Streets for Pedestrian and Bicycle Safety.”</i> The plan also investigated <i>complex pedestrian crossings</i> at intersections including Monroe Street at Causeway Boulevard. She conducted several meetings, including a public meeting, to gather input for the most desirable routes. She coordinated with many agencies including Mandeville’s Planning and Zoning Board, Mandeville Public Works Department, the Mandeville Council, the Regional Planning Commission, and the Causeway Commission. Construction Cost: \$2.6 M			




Firm employed by: <i>Meyer Engineers, Ltd.</i>			
Name	<i>Eric Colwart, P.E.</i>	Years of relevant experience with this firm/employer	<i>17</i>
Title	<i>Civil Engineer</i>	Years of relevant experience with other firm(s)/employer(s)	<i>0</i>
Degree(s) / Years / Specialization		<i>B.S. Civil Engineering, 2005, Louisiana State University</i>	
Active registration number / state / expiration date		<i>36290 / LA / 09-30-2023</i>	
Year registered	<i>2011</i>	Discipline	<i>Civil Engineering</i>
Contract role(s) / brief description of responsibilities		<i>Civil Engineer</i>	
Experience dates (mm/yy–mm/yy)	Experience and qualifications relevant to the proposed contract; <i>i.e.</i> , “designed drainage”, “designed girders”, “designed intersection”, etc. Experience dates should cover the time specified in the applicable MPR(s).		
Eric Colwart will perform Civil Engineering design and drafting for this project. His experience includes client contact, cost estimates, design, construction administration, preparation of reports, plans and specifications. This also includes plan/profile sheets, preparation of as-builts and record drawings, updating facility plans and CADD details. He has designed projects in accordance with <i>DOTD’s “Roadway Design Manual”, “Complete Streets Manual”, “Hydraulics Manual”, “Bridge Manual”, AASHTO’s “Green Book”,</i> and the “Louisiana Standards and Specifications for Roads and Bridges”.			
<i>11/14-05/18</i>	<i>S. Galvez Street (Toledano Street to Martin Luther King Boulevard, Orleans Parish:</i> Project Engineer for the design of the <i>reconstruction</i> of S. Galvez from Toledano Street to Martin Luther King Boulevard (approximately 1,800 feet). The construction of the <i>concrete roadway</i> included two 12-foot-wide traveling lanes and 8’ parking lane in each direction separated by a median. Additional features included curbs, new traffic signals, subsurface drainage, water line, sewer line, and street lighting replacement. Construction Cost: \$5.5M		
<i>08/12-05/20</i>	<i>Treme-Lafitte Neighborhood Infrastructure Rehabilitation, Orleans Parish:</i> Project Engineer for the design for the <i>infrastructure rehabilitation</i> project for the Treme-Lafitte Neighborhood. The neighborhood consists of about 200 blocks in the City of New Orleans bounded by Esplanade Avenue, St. Louis Street, N. Broad Street, and N. Rampart Street. The project consisted of the repair or replacement of roadway pavement, curbs, <i>sidewalks</i> , and driveways damaged by Hurricane Katrina. The project also consists of upgrading of the water line system including modifications to the existing system and upgrading or constructing handicapped ramps at intersections to bring the neighborhood up to current <i>ADA standards</i> . Construction Cost: \$5.8M (EST)		
<i>02/18-01/24</i>	<i>State Project No. H.013525: 40 Arpent Trail, St. Bernard Parish:</i> Project Engineer for the design of two <i>bicycle/pedestrian bridges</i> across the canal at Val Riess Park and De Bouchel Boulevard. The work also includes a <i>10’ wide asphalt multi-use path</i> including striping, signage, and signals along the Forty Arpent Canal for approximately 8 miles from Arabi near Alexander Avenue to the Violet Canal. The <i>multi-use path will be designed for walkers, joggers, bicyclists, skaters, and other non-motorized users</i> . The funding is being provided by a federal grant from the Federal Highway Administration’s Surface Transportation Program. He is <i>coordinating with DOTD</i> and local parish officials. Construction Cost: \$7.9M		
<i>12/21-Present</i>	<i>Gayoso Street / Greenway Pedestrian Bridge, Orleans Parish:</i> Project Engineer for the design of a <i>pedestrian bridge</i> over an existing drainage canal from the Lafitte Greenway Trail to North Gayoso Street. The <i>steel bridge is 10’ wide by 46’ long with composite decking and pedestrian safety rails</i> . The project also includes <i>ADA accessible ramps</i> leading up to the bridge and <i>sidewalk improvements</i> at the N. Gayoso Street and St. Louis Street intersection. The bridge allows residents on the east side of the canal to access the Lafitte Greenway Trail. The project is a Cooperative Endeavor Agreement between a private developer and the City of New Orleans.		
<i>11/15-12/18</i>	<i>State Project No. H.011857: Wisner Boulevard Shared Use Path, Orleans Parish:</i> Project Engineer for the design of the <i>10’ wide concrete path for bicycles and pedestrians</i> along Wisner Boulevard. The path is on the Bayou St. John side of Wisner Boulevard and begins at the termination of the existing bike path, north of I-610 and ends at Esplanade Avenue. The project included coordination and design striping for street crossings of the shared use path along Bayou St. John and the implementation of traffic signals. He <i>coordinated with</i> the City of New Orleans Public Works, New Orleans Traffic Engineering, Regional Planning Commission, <i>DOTD</i> District 02, and New Orleans City Park Officials. Construction Cost: \$410K (<i>LADOTD TAP Funded Project</i>)		




Firm employed by: <i>Meyer Engineers, Ltd.</i>			
Name	<i>Tyler J. Gettys, P.E.</i>	Years of relevant experience with this firm/employer	2
Title	<i>Civil Engineer</i>	Years of relevant experience with other firm(s)/employer(s)	4
Degree(s) / Years / Specialization		<i>B.S. Civil Engineering, 2017, Louisiana State University</i>	
Active registration number / state / expiration date		<i>46806 / LA / 09-30-2024</i>	
Year registered	<i>2022</i>	Discipline	<i>Civil Engineering</i>
Contract role(s) / brief description of responsibilities		<i>Civil Engineer</i>	
Experience dates (mm/yy–mm/yy)	Experience and qualifications relevant to the proposed contract; <i>i.e.</i> , “designed drainage”, “designed girders”, “designed intersection”, etc. Experience dates should cover the time specified in the applicable MPR(s).		
Tyler J. Gettys has over six years of engineering experience and will assist with engineering design and CADD drafting. His experience includes roadway design, bridge replacements, safety projects, roundabouts, and signalized intersections. He has developed typical sections, summary of quantities, design plan and profiles, geometric details/graphical grades, pavement marking/signing sheets, sequencing of construction and detour signing, diversion bridges and cross sections. He is proficient in Bentley Software Systems including MicroStation, Inroads & ProjectWise, AutoTURN, IHSDM Safety Predictive Analysis, AASHTO Ware Project Preconstruction Software, AutoCAD, GIS systems, HYDRWIN Hydraulic Software and Watershed Modeling System (WMS).			
<i>11/22-Present</i>	<i>State Project No. H.009724: St. James Mississippi Eastbank Multi-Use Trail – Phase I, St. James Parish:</i> Assisting with designing the <i>multi-use path</i> on the protected side of the Mississippi River. The project is primarily funded by the <i>DOTD Transportation Alternatives Program (TAP)</i> . The project is the first of multiple projects intended to provide a <i>levee trail</i> throughout the entirety of St. James Parish. Included in this project is a <i>10’ multi-use path</i> , open ditch and subsurface drainage, and embankment widening. Construction Cost: \$2.2M (EST)		
<i>02/22-Present</i>	<i>Lafreniere Park Bike Path Phase I, Jefferson Parish:</i> Project Engineer currently designing a <i>bike path</i> in Lafreniere Park. The bike path is approximately <i>1,600’ of new paved path</i> along the southwest side of the park. The new path will begin at Scenic Drive and extend to Downs Boulevard. Additionally Scenic Drive and Downs Boulevard will be <i>restriped for bicycle lanes</i> . The project also includes signing, striping, earthwork, and drainage modifications. Construction Cost: \$308K (EST)		
<i>06/21-Present</i>	<i>State Project No. H.013850: Duplessis Road Safety Widening, Ascension Parish:</i> Assisting with the design for the Duplessis Road Safety <i>Widening</i> Project. Duplessis Road is categorized as an <i>Urban Collector Roadway</i> that provides a <i>connection between major LA DOTD roads:</i> Airline Highway (US 61) and Old Jefferson Highway (LA Highway 73). As part of the Move Ascension roadway improvement program, Meyer is tasked with designing the <i>full roadway reconstruction</i> of the 1.65-mile portion of the road to <i>widen the road</i> from 18’ wide to 26’ wide (two (2) 11’ lanes and two (2) 2’ wide paved shoulders). The <i>roadway and shoulder safety widening</i> will aide in vehicle recovery and provide a <i>safer roadway</i> for traveling motorists. Also included in this project is the drainage design and layout of the new subsurface and roadside ditch sections. Construction Cost: \$5.2M (EST)		
<i>2018-2021</i>	Mr. Gettys <i>previously worked for the Louisiana Department of Transportation and Development (LADOTD) (2018-2021), where he was a Roadway Designer who designed/developed roadway plans.</i> Below are projects he worked on with LADOTD:  <i>State Project No. H.012852: I-20 WB Off Ramp at LA 617, Ouachita Parish</i>  <i>State Project No. H.001140: LA 124: Hooter Creek Bridge, Catahoula Parish</i>  <i>State Project No. H.012052: LA 3092 Roundabout Calcasieu Parish</i>		




FIRM EMPLOYED BY		SJB Group, LLC				
NAME	Matthew Estopinal, PE, PLS	YEARS OF EXPERIENCE WITH THIS FIRM		2		
TITLE	CEO/Principal-in-Charge	YEARS OF EXPERIENCE WITH OTHER FIRMS		25		
DEGREE YEAR SPECIALIZATION		B.S. in Civil Engineering 2009 Louisiana State University B.S. in Microbiology 1996 Louisiana State University				
ACTIVE REGISTRATION NUMBER STATE EXP. DATE		PE.0039151 Louisiana 3/31/2025	YEAR REGISTERED	2014	DISCIPLINE	Professional Engineer
ACTIVE REGISTRATION NUMBER STATE EXP. DATE		PLS.0004955 Louisiana 3/31/2025	YEAR REGISTERED	2006	DISCIPLINE	Professional Land Surveyor
ACTIVE REGISTRATION NUMBER STATE EXP. DATE		PE.122184 Tennessee 1/31/2025	YEAR REGISTERED	2019	DISCIPLINE	Professional Engineer
ACTIVE REGISTRATION NUMBER STATE EXP. DATE		PE.32982 Mississippi 12/23/2023	YEAR REGISTERED	2022	DISCIPLINE	Professional Engineer
ACTIVE REGISTRATION NUMBER STATE EXP. DATE		PE.145117 Texas 3/31/2024	YEAR REGISTERED	2022	DISCIPLINE	Professional Engineer
CONTRACT ROLE AND BRIEF DESCRIPTION OF RESPONSIBILITIES		QA/QC. Mr. Estopinal has more than fifteen years of experience as a Professional Land Surveyor in the State of Louisiana on transportation and community development related projects. His work experience includes ALTA Surveys, Boundary Surveys, Topographic Surveys, and Right-of-Way Mapping for state, municipal, and private clients. His duties include coordination of staff, responsible charge of all plan production, all field inspections, and the preparation of detailed construction plans on all types of work. His responsibilities for this project include coordination of staff, responsible charge of all plan production, all field inspections, and the preparation of detailed construction plans on all types of work.				
EXPERIENCE DATES	EXPERIENCE AND QUALIFICATIONS RELEVANT TO THE PROPOSED CONTRACT.					
4/23 – Ongoing	LA DOTD Project No. H.017322.5 – Morgan City Sidewalks & Shared Use Path, St. Mary Parish QA/QC. Sub to Digital Engineering. This project includes a Topographic Survey as well as Quality Level “D” and Quality Level “C” Subsurface Utility Engineering to assist in the installation of sidewalks, handicapped ramps, drainage structures, and other related work in Morgan City.					
11/22 – 4/23	City-Parish Project No. 20-CP-US-0099 – MoveBR – Airline Highway North (Florida Boulevard to I-110) QA/QC. Sub to Huval and Associates, Inc. This project involved a Corridor LiDAR Survey and Quality Level “D” Subsurface Utility Engineering services on northbound Airline Highway between Florida Boulevard and I-110 for the proposed improvements of the four-lane divided arterial roadway to increase capacity and safety in the area as well as improve pedestrian movement through the corridor.					
3/22 – Ongoing	The Settlement on Shoe Creek – Phase 2 of 3 <i>CAD Technician.</i> This project involved professional engineering and land surveying services for The Settlement on Shoe Creek for development phase 2 of 3, which covers approximately 225 residential lots. This includes Topographic Surveys, preliminary plats, ALTA surveys, As-Built Surveys, LOMR-F preparation and submission, and final plats.					


3/22 – Ongoing	LA DOTD Project No. H.012685.5 – LA 385: Ryan Street Intersection Improvements QA/QC. This project included a Topographic Survey in Calcasieu Parish near the intersection of I-210 and LA 385 (Ryan Street) and near the campus of McNeese State University. The survey included all utilities, drainage, and finish floor elevations of buildings that fell within the survey limits. The total linear distance was approximately 2.67 miles.
2/22 – 6/22	LA DOTD Project No. H.014752.5 – LA 3021: Dual Turn Lanes @ LA 38 QA/QC. Prime Consultant. This project included a Topographic Survey of the LA 39 (North Claiborne Avenue) and LA 46 (Elysian Fields Avenue) intersection in Orleans Parish. This included all utilities, including depths, drainage, and finish floor elevations of buildings within the survey limits. The project had a total linear distance of approximately 3,600 feet.
12/21 – Ongoing	City-Parish Project Nos. 20-TS-HC-0075 & 20-TS-HC-0080 – MoveBR Synchronization & Communication Signal Rebuilds – Group 2 <i>Surveyor of Record.</i> This project involved a Topographic Survey and Right-of-Way Mapping for six intersections.
11/21 – 12/21	Conway Development Topographic Survey <i>Project Manager.</i> Sub to Novus Reb Engineering. This project involved a Topographic Survey of a tract in the Conway development and included running cross-sections through the project limits. Shots were taken with the use of a Robotic Total Station and 360D prism mounted on a closed cab UTV. Horizontal and vertical control was established at the site with Leica SmartNET RTN.
7/21 – 9/22	LA DOTD Project No. H.004100.5 – I-10: LA 415 to Essen on I-10 and I-12 QA/QC. Prime Consultant. This project included a Property Survey and extensive Right-of-Way Mapping for approximately 4 miles of I-10 as well as multiple intersecting streets, which included parcel data for approximately 125 parcels. This project also included extensive Quality Level “D” and Quality Level “B” Subsurface Utility Engineering throughout a 10 mile section of the project corridor.
7/21 – 2/22	LA DOTD Project No. H.012851 – Union Pacific Railroad Corridor (Plaquemine) QA/QC. Prime Consultant This project involved a Topographic Survey for the project located in Iberville Parish along the Union Pacific Railroad Corridor between the intersection of LA 1 and Bayou Road and the intersection of Belleview Drive and Railroad Avenue. The project included title research and field data collection for the preparation of a Property map and Right-of-Way map set. This project also included Quality Level “B”, “C”, and “D” Subsurface Utility Engineering and utility surveying.
6/21 – 10/21	LA DOTD Project No. H.007963 – Blackwater Bayou Bridge <i>Project Manager / QA/QC.</i> Prime Consultant. This project required replacement of the Bayou River Bridge and a diversion road during construction along LA Hwy 410 in East Baton Rouge Parish near the City/Town of Central. This project involved Property Survey, Right-of-Way Mapping, and title take-offs. This project went through design changes which halted project progress temporarily and significantly changed the required taking.
3/21 – 5/22	City-Parish Project No. 20-CP-HC-0032 – MoveBR Nicholson Segment 2 <i>Survey Project Manager.</i> Sub to Volkert. SJB Group performed a Topographic Survey, Subsurface Utility Engineering, Property Survey, and Right-of-Way Mapping of a 4.1 mile wide stretch of Nicholson Drive (LA 30) from Bluebonnet Boulevard to Ben Hur Road in East Baton Rouge Parish for a City-Parish widening project.
1/21 – 6/21	East Baton Rouge City/Parish Project No. 20-PS-IF-0109 – DES Regional Pump Station #299 <i>Project Manager/Surveyor of Record.</i> This project required a Topographic Survey and Property Survey with the preparation of Right-of-Way maps for a force-main extension from the eastern end of Constantin Phase 2 (Dijon) to an existing Sewer Pump Station on the west side of Bluebonnet Boulevard.

FIRM EMPLOYED BY		SJB Group, LLC				
NAME	C. Tim Brewer, RF, PS, PLS, RPLS, RPP			YEARS OF EXPERIENCE WITH THIS FIRM	2	
TITLE	Vice President			YEARS OF EXPERIENCE WITH OTHER FIRMS	28	
DEGREE YEAR SPECIALIZATION		B.S. in Forestry Management 1988 Mississippi State University				
ACTIVE REGISTRATION NUMBER STATE EXP. DATE		PLS.0005009 Louisiana 9/30/2023	YEAR REGISTERED	2009	DISCIPLINE	Professional Land Surveyor
ACTIVE REGISTRATION NUMBER STATE EXP. DATE		PLS.35341-S Alabama 12/31/2023	YEAR REGISTERED	2015	DISCIPLINE	Professional Land Surveyor
ACTIVE REGISTRATION NUMBER STATE EXP. DATE		RPLS.6142 Texas 12/31/2023	YEAR REGISTERED	2010	DISCIPLINE	Reg. Prof. Land Surveyor
ACTIVE REGISTRATION NUMBER STATE EXP. DATE		PS.1683 Arkansas 6/30/2023	YEAR REGISTERED	2009	DISCIPLINE	Professional Surveyor
ACTIVE REGISTRATION NUMBER STATE EXP. DATE		LS.2726 Tennessee 12/31/2023	YEAR REGISTERED	2008	DISCIPLINE	Land Surveyor
ACTIVE REGISTRATION NUMBER STATE EXP. DATE		80756RPP Oregon 12/31/2023	YEAR REGISTERED	2008	DISCIPLINE	Reg. Prof. Photogrammetrist
ACTIVE REGISTRATION NUMBER STATE EXP. DATE		PLS.2766 Mississippi 12/31/2023	YEAR REGISTERED	1999	DISCIPLINE	Professional Land Surveyor
ACTIVE REGISTRATION NUMBER STATE EXP. DATE		RF.1286 Mississippi 12/31/2023	YEAR REGISTERED	1988	DISCIPLINE	Registered Forester
CONTRACT ROLE AND BRIEF DESCRIPTION OF RESPONSIBILITIES		<p>Project Manager. Mr. Brewer brings more than thirty years of experience in surveying to the firm. He is licensed as a Professional Land Surveyor in Louisiana, Alabama, Texas, Arkansas, Tennessee, and Mississippi as well as a Registered Forester in Mississippi and a Registered Professional Photogrammetrist in the state of Oregon. He has managed a variety of projects throughout his career including but not limited to: Control Surveys for aerial surveying and mapping, ALTA/NSPS Surveys, Topographic Surveys, Construction Staking Surveys, Right-of-Way Acquisition Surveys, As-Built Surveys, and Eminent Domain Surveys as an expert witness. He has served as a court-appointed Professional Land Surveyor for Property disputes and expert witness testimony, along with appointments for estate sub-divisions. His responsibilities include overseeing project completion and field work, allocating resources appropriately, utilizing field data to create detailed survey drawings, and reviewing drawings for errors and omissions.</p>				
EXPERIENCE DATES	EXPERIENCE AND QUALIFICATIONS RELEVANT TO THE PROPOSED CONTRACT.					


4/23 – Ongoing	<p>LA DOTD Project No. H.017322.5 – Morgan City Sidewalks & Shared Use Path, St. Mary Parish</p> <p><i>Project Manager.</i> Sub to Digital Engineering. This project includes a Topographic Survey as well as Quality Level “D” and Quality Level “C” Subsurface Utility Engineering to assist in the installation of sidewalks, handicapped ramps, drainage structures, and other related work in Morgan City.</p>
3/22 – Ongoing	<p>LA DOTD Project No. H.012685.5 – LA 385: Ryan Street Intersection Improvements</p> <p><i>Project Manager.</i> This project included a Topographic Survey in Calcasieu Parish near the intersection of I-210 and LA 385 (Ryan Street) and near the campus of McNeese State University. The survey included all utilities, drainage, and finish floor elevations of buildings that fell within the survey limits. The total linear distance was approximately 2.67 miles.</p>
7/21 – 5/23	<p>LA DOTD Project No. H.004100 – I-10: LA 415 to Essen</p> <p><i>Project Manager.</i> Prime Consultant. This project included a Property Survey and extensive Right-of-Way Mapping for approximately 4 miles of I-10 as well as multiple intersecting streets, which included parcel data for approximately 125 parcels. This project also included extensive Quality Level “D” and Quality Level “B” Subsurface Utility Engineering throughout a 10 mile section of the project corridor.</p>
10/20 – 8/22	<p>LA DOTD Project No. H.002176.50 – LA 10 Bridges</p> <p><i>Project Manager.</i> The LA 10 Bridges project in St. Landry Parish included Right-of-Way Mapping for three sites. This included the production of base Right-of-Way maps as well as a set of signed and sealed Right-of-Way maps for each site. SJB Group surveyed the affected properties and determined the existing Right-of-Way for LA Hwy 10 and multiple state-claimed water bodies. A set of preliminary Property Survey maps depicting the existing Right-of-Way and property lines within the project limits were submitted.</p>
7/21 – 2/22	<p>LA DOTD Project No. H.012851 – Union Pacific Railroad Corridor (Plaquemine)</p> <p><i>Project Manager.</i> Prime Consultant. This project involved a Topographic Survey for the project located in Iberville Parish along the Union Pacific Railroad Corridor between the intersection of LA 1 and Bayou Road and the intersection of Belleview Drive and Railroad Avenue. The project included title research and field data collection for the preparation of a Property map and Right-of-Way map set. This project also included Quality Level “B”, “C”, and “D” Subsurface Utility Engineering and utility surveying.</p>
6/18 – 11/21	<p>LA DOTD Project No. H.012001 – LA 339 Canal and Creek Bridges</p> <p><i>Project Manager.</i> The LA 339 Canal and Creek Bridges project in Vermillion Parish included Right-of-Way surveys for 3 sites. SJB surveyed the affected properties and determined the existing right-of-way for LA Highway 339 and multiple intersecting streets. SJB Group submitted a set of preliminary property survey maps depicting the existing right-of-way as well as property lines within the project limits.</p>
6/22 – 12/22	<p>LA DOTD Project No. H.013716 – US 167 – Camellia Boulevard-Churchill Drive</p> <p><i>Project Manager.</i> Sub to Digital Engineering & Imaging, Inc. This project involved a thorough Topographic Survey and Right-of-Way Mapping of the Camellia Boulevard and Churchill Drive intersection area. All surveying was performed to LADOTD Location & Survey Section requirements.</p>
8/20 – 3/22	<p>LA DOTD Contract No. 4400017597 – Rural Bridge Replacement Initiative</p> <p><i>Project Manager.</i> Sub to Burk-Kleinpeter, Inc. This project included a Topographic Survey, Right-of-Way Mapping, and Roadway Design performed for the proposed 33 bridge replacements for LA DOTD Districts 03, 07, 61, and 62. Each site required a complete Property map and the preparation of Right-of-Way maps with supporting data for Right-of-Way acquisition. The Topographic Survey of the project limits of each bridge included a complete inventory for each drainage structure (type, size, length, and invert) and cross sections of all drainage ways.</p>

FIRM EMPLOYED BY				SJB Group, LLC		
NAME		Phillip Dowden	YEARS OF EXPERIENCE WITH THIS FIRM		2	
TITLE		Mobile LiDAR Lead	YEARS OF EXPERIENCE WITH OTHER FIRMS		26	
DEGREE YEAR SPECIALIZATION		N/A				
ACTIVE REGISTRATION NUMBER STATE EXPIRATION DATE			N/A			
YEAR REGISTERED	N/A	DISCIPLINE	N/A			
CONTRACT ROLE AND BRIEF DESCRIPTION OF RESPONSIBILITIES	<p>Mobile LiDAR Lead. Mr. Dowden has more than twenty-seven years of experience in the survey field. His experience includes land survey and powerline design, Marine Surveying, Boundary and ALTA Surveys, vessel offset surveys and calibrations for offshore wind farms, planning and coordinating offshore rig relocations, Hazard Surveys, bathymetry and seafloor mapping, and extensive experience with GPS control. He is knowledgeable in a variety of software including Trimble Business Center, POSPac MMS, TopoDOT, OpenRoads Designer, LadybugCapPro, IrfanView 64, and Quick Terrain Modeler. He is also thoroughly knowledgeable in a variety of equipment, such as the Trimble MX50 and tertiary equipment such as DMI, Ladybug, and Leica Base Positioning, Faro S350, Geoslam, and compact microdrones with Teledyne LiDAR, amongst others. His responsibilities include processing field data, project management, and occasionally conducting field work.</p>					
EXPERIENCE DATES	EXPERIENCE AND QUALIFICATIONS RELEVANT TO THE PROPOSED CONTRACT.					
4/23 – Ongoing	<p>City-Parish Project No. 21-DR-US-0038 – EBRP Flood Risk Reduction Project for Beaver and Blackwater Channel Improvements <i>Mobile LiDAR Lead.</i> This project included a Topographic Survey, a Boundary Survey, and Right-of-Way Mapping to assist in the ongoing flood risk reduction project throughout East Baton Rouge Parish, specifically in channels connected to Beaver Bayou and Blackwater Bayou in Central, LA. This project also included Quality Level “D” and Quality Level “B” Subsurface Utility Engineering Services.</p>					
4/23 – Ongoing	<p>LA DOTD Project No. H.017322.5 – Morgan City Sidewalks & Shared Use Path, St. Mary Parish <i>Mobile LiDAR Lead.</i> Sub to Digital Engineering. This project includes a Topographic Survey as well as Quality Level “D” and Quality Level “C” Subsurface Utility Engineering to assist in the installation of sidewalks, handicapped ramps, drainage structures, and other related work in Morgan City.</p>					
1/23 – Ongoing	<p>LA DOTD Contract No. 44-22830 – ADA Transition Plan Update Phase 1 – District 3 Pilot Study <i>Mobile LiDAR Lead.</i> Sub to Kimley Horn. This project involved a Topographic Survey to allow LA DOTD to perform an updated self-evaluation of the existing Transition Plan under Title II of the Americans with Disabilities Act (ADA). SJB Group gathered LiDAR data and associated imagery along 30 linear miles of sidewalks along DOTD roadways.</p>					
11/22 - Ongoing	<p>LSU Science Zone <i>Project Manager.</i> Sub to Infinity. This project involved a Topographic Survey and Quality Level “B” and Quality Level “A” Subsurface Utility Engineering in preparation for the installation of a specialty underground chilled water system piping for the Science Zone of Louisiana State University’s Baton Rouge Campus. Portions of this project were time-sensitive and would impact the critical path of Infinity’s project if delayed, requiring efficient completion of requested services in order to maintain the project schedule.</p>					


11/22 – 4/23	<p>City-Parish Project No. 20-CP-US-0099 – MoveBR – Airline Highway North (Florida Boulevard to I-110) <i>Mobile LiDAR Lead.</i> Sub to Huval and Associates, Inc. This project involved a Corridor LiDAR Survey and Quality Level “D” Subsurface Utility Engineering services on northbound Airline Highway between Florida Boulevard and I-110 for the proposed improvements of the four-lane divided arterial roadway to increase capacity and safety in the area as well as improve pedestrian movement through the corridor.</p>
10/22 – 12/22	<p>Our Lady of the Lake Cancer Center <i>Project Manager.</i> Sub to Stantec. This project involved a Limited Boundary Survey, Partial Topographic Survey, and Quality Level “D”, Quality Level “C”, and Quality Level “B” Subsurface Utility Engineering Services for a tract in the Theo Cangelosi Tract in Baton Rouge.</p>
10/22 – 10/22	<p>1508 W Dumbarton Scan <i>Mobile LiDAR Lead.</i> Sub to Reich Landscape Architecture. This project involved 3D scanning, data processing, and point cloud creation for the exterior of a residence located on West Dumbarton Drive in Lake Charles. A 3D scan of the entire lot using GeoSLAM was performed along with supplemental high-precision terrestrial scans with a FARO scanner as needed.</p>
9/22 – 4/23	<p>LADOTD Project No. H.014886.5 – US90: Tulane Avenue – Danziger Bridge <i>Project Manager.</i> Sub to Stanley Consultants. This project involved a full Topographic Survey and a survey of all pavement to develop a pavement preservation study. This was accomplished using Mobile LiDAR Scanning.</p>
6/22 – 12/22	<p>LA DOTD Project No. H.013716 – US 167 – Camellia Boulevard-Churchill Drive <i>Mobile LiDAR Lead.</i> Sub to Digital Engineering & Imaging, Inc. This project involved a thorough Topographic Survey and Right-of-Way Mapping of the Camellia Boulevard and Churchill Drive intersection area. All surveying was performed to LADOTD Location & Survey Section requirements.</p>
3/22 – Ongoing	<p>LA DOTD Project No. H.012685.5 – LA 385: Ryan Street Intersection Improvements <i>Mobile LiDAR Lead.</i> This project included a Topographic Survey in Calcasieu Parish near the intersection of I-210 and LA 385 (Ryan Street) and near the campus of McNeese State University. The survey included all utilities, drainage, and finish floor elevations of buildings that fell within the survey limits. The total linear distance was approximately 2.67 miles.</p>
10/21 – 4/22	<p>LA DOTD Project No. H.010319.5 – I-110 North to Plank Road <i>Mobile LiDAR Lead.</i> Sub to Buchart Horn. This project involved Quality Level “D” and Quality Level “C” Subsurface Utility Engineering services for all utilities on this LA DOTD project in East Baton Rouge Parish. Achieving Quality Level “D” and Quality Level “C” required extensive records research to aid in the subsequent Subsurface Utility Engineering design.</p>

FIRM EMPLOYED BY		SJB Group, LLC		
NAME	Tuesdie Savoy	YEARS OF EXPERIENCE WITH THIS FIRM	1	
TITLE	CAD Technician	YEARS OF EXPERIENCE WITH OTHER FIRMS	30	
DEGREE YEAR SPECIALIZATION		N/A		
ACTIVE REGISTRATION NUMBER STATE EXPIRATION DATE		N/A		
YEAR REGISTERED	N/A	DISCIPLINE	N/A	
CONTRACT ROLE AND BRIEF DESCRIPTION OF RESPONSIBILITIES	<p>CAD Technician. Mrs. Savoy has been in the Drafting and Design Industry for 30 years across several disciplines in both oil and gas and the Municipal sector. She has worked as a CAD Technician on a variety of projects, including drainage study and repair projects, Right-of-Way Mapping, road widening projects, multi-use path projects, sidewalk projects, and more for the State of Louisiana and City-Parish governments. She is knowledgeable in the AutoDesk Suite as well as Bentley MicroStation. Her responsibilities include preparing plans and specifications from processed field data, implementing changes to project drawings, reviewing drawings for errors and omissions, and implementing changes as directed by project managers.</p>			
EXPERIENCE DATES	EXPERIENCE AND QUALIFICATIONS RELEVANT TO THE PROPOSED CONTRACT.			
4/23 – Ongoing	<p>LA DOTD Project No. H.017322.5 – Morgan City Sidewalks & Shared Use Path, St. Mary Parish <i>CAD Technician.</i> Sub to Digital Engineering. This project includes a Topographic Survey as well as Quality Level “D” and Quality Level “C” Subsurface Utility Engineering to assist in the installation of sidewalks, handicapped ramps, drainage structures, and other related work in Morgan City.</p>			
6/22 – 12/22	<p>LA DOTD Project No. H.013716 – US 167 – Camellia Boulevard-Churchill Drive <i>CAD Technician.</i> Sub to Digital Engineering & Imaging, Inc. This project involved a thorough Topographic Survey and Right-of-Way Mapping of the Camellia Boulevard and Churchill Drive intersection area. All surveying was performed to LADOTD Location & Survey Section requirements.</p>			
4/22 – 09/22	<p>Pelican State Credit Union <i>CAD Technician.</i> Sub to Facilities Maintenance Management. This project included a Topographic Survey, construction documents, and permitting for the existing Pelican State Credit Union Branch drainage improvements on O’Neal Lane.</p>			
3/22 – Ongoing	<p>The Settlement on Shoe Creek – Phase 2 of 3 <i>CAD Technician.</i> This project involved professional engineering and land surveying services for The Settlement on Shoe Creek for development phase 2 of 3, which covers approximately 225 residential lots. This includes Topographic Surveys, preliminary plats, ALTA surveys, As-Built Surveys, LOMR-F preparation and submission, and final plats.</p>			


3/22 – 05/22	<p>Southern University Campus <i>CAD Technician.</i> Sub to Professional Engineering Consultants Corporation. This project included a Topographic Survey and Boundary Survey in support of the drainage repair and road overlay project at the Southern University Campus in Baton Rouge.</p>
2/22 – Ongoing	<p>Parish of Ascension Project No. MA-19-03 – Joe Sevario Road @ LA 933 Roundabout <i>CAD Technician.</i> This project involved a Topographic Survey, Preliminary Plans, Lighting Plans, Right-of-Way Mapping, Geotechnical Investigation, and all Quality Levels of Subsurface Utility Engineering for the design and implementation of a single-lane asphalt roundabout at the intersection of Joe Sevario Road and LA 933 in Gonzales, LA to replace the existing stop-controlled intersection.</p>
2/22 – 2/23	<p>Livonia Acres Residential Subdivision <i>CAD Technician.</i> Sub to Pointe Prospect, LLC. This project included a Boundary Survey and Re-subdivision, Topographic Survey, Subsurface Utility Engineering, Drainage Impact Study, Construction Drawings, Construction Staking, Final Plat, and As-Built Drawings.</p>
2/22 – 6/22	<p>LA DOTD Project No. H.014752.5 – LA 3021: Dual Turn Lanes @ LA 38 <i>CAD Technician.</i> Prime Consultant. This project included a Topographic Survey of the LA 39 (North Claiborne Avenue) and LA 46 (Elysian Fields Avenue) intersection in Orleans Parish. This included all utilities, including depths, drainage, and finish floor elevations of buildings within the survey limits. The project had a total linear distance of approximately 3,600 feet.</p>
12/21 – Ongoing	<p>City-Parish Project Nos. 20-TS-HC-0075 & 20-TS-HC-0080 – MoveBR Synchronization & Communication Signal Rebuilds – Group 2 <i>CAD Technician.</i> This project involved a Topographic Survey and Right-of-Way Mapping for six intersections.</p>
10/21 – 5/22	<p>LA DOTD Project No. H.010319.5 – I-110 North to Plank Road <i>CAD Technician.</i> Sub to Buchart Horn. This project involved Quality Level “D” and Quality Level “C” Subsurface Utility Engineering services for all utilities on this LA DOTD project in East Baton Rouge Parish. Achieving Quality Level “D” and Quality Level “C” required extensive records research to aid in the subsequent Subsurface Utility Engineering design.</p>
9/21 – Ongoing	<p>City-Parish Project No. 20-EN-HC-0027 – MoveBR – Sherwood Forest Boulevard Multi-Use Path <i>CAD Technician.</i> This project included preliminary engineering services encompassing a Design Study, Corridor Survey, and Preliminary Plans as well as a complete set of Final Plans. A Topographic Survey and engineering design were completed to improve pedestrian and bicycle mobility along S. Sherwood Forest by adding a multi-use path along the west side of the roadway.</p>
7/21 – 9/22	<p>LA DOTD Project No. H.004100 – I-10: LA 415 to Essen <i>CAD Technician.</i> Prime Consultant. This project included a Property Survey and extensive Right-of-Way Mapping for approximately 4 miles of I-10 as well as multiple intersecting streets, which included parcel data for approximately 125 parcels. This project also included extensive Quality Level “D” and Quality Level “B” Subsurface Utility Engineering throughout a 10 mile section of the project corridor.</p>
8/20 – Ongoing	<p>LA DOTD Contract No. 4400017597 – Rural Bridge Replacement Initiative <i>CAD Technician.</i> Sub to Burk-Kleinpeter, Inc. This project included a Topographic Survey, Right-of-Way Mapping, and Roadway Design performed for the proposed 33 bridge replacements for LA DOTD Districts 03, 07, 61, and 62. Each site required a complete Property map and the preparation of Right-of-Way maps with supporting data for Right-of-Way acquisition. The Topographic Survey of the project limits of each bridge included a complete inventory for each drainage structure (type, size, length, and invert) and cross sections of all drainage ways.</p>

FIRM EMPLOYED BY		SJB Group, LLC		
NAME	Elvis Nguyen	YEARS OF EXPERIENCE WITH THIS FIRM	6	
TITLE	Field Crew Manager	YEARS OF EXPERIENCE WITH OTHER FIRMS	20	
DEGREE YEAR SPECIALIZATION		N/A		
ACTIVE REGISTRATION NUMBER STATE EXPIRATION DATE		N/A		
YEAR REGISTERED	N/A	DISCIPLINE	N/A	
CONTRACT ROLE AND BRIEF DESCRIPTION OF RESPONSIBILITIES	<p>Party Chief. Mr. Nguyen has more than 26 years of experience as a survey party chief. He has led field crews in performing boundary, topographic, right-of-way, and construction stakeout surveys throughout the State of Louisiana and is capable of leading a crew in remote areas. He is knowledgeable with several Leica geosystems such as the ScanStation C10 3D Laser Scanner, TS16 Robotic Total Station, GS18 GNSS RTK Rover, and the Viva GS16 GNSS rover. Additionally, he is knowledgeable with the AutoDesk Suite, Leica Infinity, Quick Terrain Modeler, GeoConnect, FARO Scene 3D, and Global Mapper. His responsibilities coordinating field crews, equipment maintenance, fleet maintenance and coordination, processing field data, and stepping in as Party Chief as needed for field work.</p>			
EXPERIENCE DATES	EXPERIENCE AND QUALIFICATIONS RELEVANT TO THE PROPOSED CONTRACT.			
6/23 – Ongoing	<p>Belle of Baton Rouge Renovations <i>Field Crew Manager.</i> Sub to NORR. This project involved a Topographic Survey and a Right-of-Way Survey for renovations to the Belle of Baton Rouge. This work is supplemental to the survey work necessary for the preparation of the traffic signal design of St. James Street at Government Street and Subsurface Utility Engineering work for an additional geotechnical borehole investigation on River Road. This project also included Quality Level “D”, Quality Level “C”, and Quality Level “B” Subsurface Utility Engineering and engineering services. Mr. Nguyen’s responsibilities include coordinating field crews, equipment maintenance, fleet maintenance and coordination, processing field data, and stepping in as Party Chief as needed for field work.</p>			
4/23 – Ongoing	<p>LA DOTD Project No. H.017322.5 – Morgan City Sidewalks & Shared Use Path, St. Mary Parish <i>Field Crew Manager.</i> Sub to Digital Engineering. This project includes a Topographic Survey as well as Quality Level “D” and Quality Level “C” Subsurface Utility Engineering to assist in the installation of sidewalks, handicapped ramps, drainage structures, and other related work in Morgan City. Mr. Nguyen’s responsibilities include coordinating field crews, supporting field crews as a Party Chief, and processing field data.</p>			
4/23 – Ongoing	<p>City-Parish Project No. 21-DR-US-0038 – EBRP Flood Risk Reduction Project for Beaver and Blackwater Channel Improvements <i>Field Crew Manager.</i> This project included a Topographic Survey, a Boundary Survey, and Right-of-Way Mapping to assist in the ongoing flood risk reduction project throughout East Baton Rouge Parish, specifically in channels connected to Beaver Bayou and Blackwater Bayou in Central, LA. This project also included Quality Level “D” and Quality Level “B” Subsurface Utility Engineering Services. Mr. Nguyen’s responsibilities include coordinating field crews, equipment maintenance, fleet maintenance and coordination, processing field data, and stepping in as Party Chief as needed for field work.</p>			

11/22 - Ongoing	<p>LSU Science Zone <i>Field Crew Manager.</i> Sub to Infinity. This project involved a Topographic Survey and Quality Level “B” and Quality Level “A” Subsurface Utility Engineering in preparation for the installation of a specialty underground chilled water system piping for the Science Zone of Louisiana State University’s Baton Rouge Campus. Portions of this project were time-sensitive and would impact the critical path of Infinity’s project if delayed, requiring efficient completion of requested services in order to maintain the project schedule.</p>
6/22 – 12/22	<p>LA DOTD Project No. H.013716 – US 167 – Camellia Boulevard-Churchill Drive <i>Project Manager.</i> Sub to Digital Engineering & Imaging, Inc. This project involved a thorough Topographic Survey and Right-of-Way Mapping of the Camellia Boulevard and Churchill Drive intersection area. All surveying was performed to LADOTD Location & Survey Section requirements.</p>
3/22 – Ongoing	<p>LA DOTD Project No. H.012685.5 – LA 385: Ryan Street Intersection Improvements <i>Field Crew Manager.</i> This project included a Topographic Survey in Calcasieu Parish near the intersection of I-210 and LA 385 (Ryan Street) and near the campus of McNeese State University. The survey included all utilities, drainage, and finish floor elevations of buildings that fell within the survey limits. The total linear distance was approximately 2.67 miles. Mr. Nguyen’s responsibilities include coordinating field crews, equipment maintenance, fleet maintenance and coordination, processing field data, and stepping in as Party Chief as needed for field work.</p>
7/21 – 2/22	<p>LA DOTD Project No. H.012851 – Union Pacific Railroad Corridor (Plaquemine) <i>Party Chief.</i> Prime Consultant. This project involved a Topographic Survey for the project located in Iberville Parish along the Union Pacific Railroad Corridor between the intersection of LA 1 and Bayou Road and the intersection of Belleview Drive and Railroad Avenue. The project included title research and field data collection for the preparation of a Property map and Right-of-Way map set. This project also included Quality Level “B”, “C”, and “D” Subsurface Utility Engineering and utility surveying. Mr. Nguyen’s responsibilities included working alongside other field crew members to gather necessary data, maintaining safe work practices, topographic linework, and surveying all drainage, utilities, and topographic features within the survey limits.</p>
3/21 – 6/21	<p>State Project No. H.010885.5 – LA 91: Bayou Plaquemine Brusly Bridge Replacement <i>Party Chief.</i> This project involved a Topographic Survey for LA DOTD for replacement of the Bayou Plaquemine/Brusly Bridge. Mr. Nguyen’s responsibilities included working alongside other field crew members to gather necessary data, maintaining safe work practices, topographic linework, and surveying all drainage, utilities, and topographic features within the survey limits.</p>
8/20 – 3/21	<p>LA DOTD Project No. H.004100.5 – I-10: LA 415 to Essen Lane on I-10 and I-12 <i>Party Chief.</i> Prime Consultant. This project included a Property Survey and extensive Right-of-Way Mapping for approximately 4 miles of I-10 as well as multiple intersecting streets, which included parcel data for approximately 125 parcels. This project also included extensive Quality Level “D” and Quality Level “B” Subsurface Utility Engineering throughout a 10 mile section of the project corridor. Mr. Nguyen’s responsibilities included working alongside other field crew members to gather necessary data, maintaining safe work practices, topographic linework, and surveying all drainage, utilities, and topographic features within the survey limits.</p>
4/20 – 11/20	<p>LA DOTD Project No. H.000688.5 – US 11 Norfolk Southern Railroad Overpass (HBI) <i>Party Chief.</i> This project involved a Topographic Survey, both Mobile and Terrestrial LiDAR Scanning, and the development of a Drainage Map of an approximately one mile section of US 11 between I-12 and US 190 in St. Tammany Parish. Mr. Nguyen’s responsibilities included working alongside other field crew members to gather necessary data, maintaining safe work practices, topographic linework, and surveying all drainage, utilities, and topographic features within the survey limits.</p>

FIRM EMPLOYED BY		SJB Group, LLC		
NAME	Daniel Biggs	YEARS OF EXPERIENCE WITH THIS FIRM	1	
TITLE	Party Chief	YEARS OF EXPERIENCE WITH OTHER FIRMS	0	
DEGREE YEAR SPECIALIZATION		N/A		
ACTIVE REGISTRATION NUMBER STATE EXPIRATION DATE		N/A		
YEAR REGISTERED	N/A	DISCIPLINE	N/A	
CONTRACT ROLE AND BRIEF DESCRIPTION OF RESPONSIBILITIES	<p>Party Chief. Mr. Biggs has one year of experience as a Survey Party Chief. He has extensive experience performing Boundary Surveys, Construction Stakeout, As-Built Surveys, ALTA Surveys, Topographic Surveys, Hydrographic Surveys, and Right-of-Way Surveys using both conventional and GPS instruments throughout the state of Louisiana. He is knowledgeable with several Leica Geosystems such as the ScanStation C10 3D Laser Scanner, TS16 Robotic Total Station, GS18 GNSS RTK Rover, and the Viva GS16 GNSS rover. His responsibilities include conducting site visits, gathering field data including measurements and other descriptive data as requested, operating surveying equipment, setting stakes and field markings, and performing both equipment and vehicle maintenance as needed.</p>			
EXPERIENCE DATES	EXPERIENCE AND QUALIFICATIONS RELEVANT TO THE PROPOSED CONTRACT.			
4/23 – Ongoing	<p>LA DOTD Project No. H.017322.5 – Morgan City Sidewalks & Shared Use Path, St. Mary Parish <i>Party Chief.</i> Sub to Digital Engineering. This project includes a Topographic Survey as well as Quality Level “D” and Quality Level “C” Subsurface Utility Engineering to assist in the installation of sidewalks, handicapped ramps, drainage structures, and other related work in Morgan City.</p>			
4/23 – Ongoing	<p>City-Parish Project No. 21-DR-US-0038 – EBRP Flood Risk Reduction Project for Beaver and Blackwater Channel Improvements <i>Party Chief.</i> This project included a Topographic Survey, a Boundary Survey, and Right-of-Way Mapping to assist in the ongoing flood risk reduction project throughout East Baton Rouge Parish, specifically in channels connected to Beaver Bayou and Blackwater Bayou in Central, LA. This project also included Quality Level “D” and Quality Level “B” Subsurface Utility Engineering Services.</p>			
3/23 – Ongoing	<p>The Waters at Bluebonnet <i>Party Chief.</i> Prime Consultant. This project included professional land surveying services related to the development of The Waters at Bluebonnet apartment complex in Baton Rouge. This included extensive construction stakeout, all required elevation certificates for every building within the project limits, the development of drainage and sewer as-built drawings of the property, and the development of drainage and sewer as-built drawings of Mayfair Drive.</p>			
1/23 – Ongoing	<p>The Waters at Materra <i>Party Chief.</i> Prime Consultant. This project included professional land surveying services related to the development of The Waters at Materra apartment complex in Baton Rouge. This included a pre-stockpile Topographic Survey and a post-stockpile Topographic Survey to be tied into the Preliminary Site Plan provided by Novus Reb. Site control was established with Leica SmartNet RTN (GPS). Ground shots were collected using a robotic total station and RTK.</p>			

<p>11/22 - Ongoing</p>	<p>LSU Science Zone <i>Party Chief.</i> Sub to Infinity. This project involved a Topographic Survey and Quality Level “B” and Quality Level “A” Subsurface Utility Engineering in preparation for the installation of a specialty underground chilled water system piping for the Science Zone of Louisiana State University’s Baton Rouge Campus. Portions of this project were time-sensitive and would impact the critical path of Infinity’s project if delayed, requiring efficient completion of requested services in order to maintain the project schedule.</p>
<p>6/22 – Ongoing</p>	<p>The Waters at Millerville <i>Party Chief.</i> Prime Consultant. This project included professional land surveying services related to the construction stakeout of the proposed improvements at The Waters at Millerville apartment complex in Baton Rouge. This included extensive construction stakeout, all required elevation certificates for every building within the project limits, and the development of drainage and sewer as-built drawings.</p>
<p>1/22 – Ongoing</p>	<p>The Waters at Heritage <i>Party Chief.</i> Prime Consultant. This project involved providing professional land surveying services for the development of the Waters at Heritage subdivision in Gonzales, including a partial Topographic Survey, construction staking, and LOMR-F application.</p>
<p>9/21 – Ongoing</p>	<p>City-Parish Project No. 20-EN-HC-0027 – MoveBR – Sherwood Forest Boulevard Multi-Use Path <i>Party Chief.</i> This project included preliminary engineering services encompassing a Design Study, Corridor Survey, and Preliminary Plans as well as a complete set of Final Plans. A Topographic Survey and engineering design were completed to improve pedestrian and bicycle mobility along S. Sherwood Forest by adding a multi-use path along the west side of the roadway.</p>
<p>1/21 – Ongoing</p>	<p>City Project No. 20-TS-HC-0075 – 20-TS-HC-0080 – MoveBR Synchronization and Communication Signal Rebuilds – Group 2 <i>Party Chief.</i> This project involved a Topographic Survey and Right-of-Way maps for six intersections.</p>

FIRM EMPLOYED BY		SJB Group, LLC		
NAME	C. Paul Young	YEARS OF EXPERIENCE WITH THIS FIRM	1	
TITLE	Assistant Party Chief	YEARS OF EXPERIENCE WITH OTHER FIRMS	34	
DEGREE YEAR SPECIALIZATION		N/A		
ACTIVE REGISTRATION NUMBER STATE EXPIRATION DATE		N/A		
YEAR REGISTERED	N/A	DISCIPLINE	N/A	
CONTRACT ROLE AND BRIEF DESCRIPTION OF RESPONSIBILITIES	<p>Assistant Party Chief. Mr. Young has almost 35 years of experience as a Survey Party Chief. He has extensive experience performing Boundary Surveys, Construction Stakeout, As-Built Surveys, ALTA Surveys, Topographic Surveys, Hydrographic Surveys, and Right-of-Way Surveys using both conventional and GPS instruments throughout the state of Louisiana. He is knowledgeable with several Leica Geosystems such as the ScanStation C10 3D Laser Scanner, TS16 Robotic Total Station, GS18 GNSS RTK Rover, and the Viva GS16 GNSS rover. His responsibilities include conducting site visits, gathering field data including measurements and other descriptive data as requested, operating surveying equipment, setting stakes and field markings, and performing both equipment and vehicle maintenance as needed.</p>			
EXPERIENCE DATES	EXPERIENCE AND QUALIFICATIONS RELEVANT TO THE PROPOSED CONTRACT.			
3/23 – Ongoing	<p>The Waters at Bluebonnet <i>Party Chief.</i> Prime Consultant. This project included professional land surveying services related to the development of The Waters at Bluebonnet apartment complex in Baton Rouge. This included extensive construction stakeout, all required elevation certificates for every building within the project limits, the development of drainage and sewer as-built drawings of the property, and the development of drainage and sewer as-built drawings of Mayfair Drive.</p>			
1/23 – Ongoing	<p>The Waters at Materra <i>Party Chief.</i> Prime Consultant. This project included professional land surveying services related to the development of The Waters at Materra apartment complex in Baton Rouge. This included a pre-stockpile Topographic Survey and a post-stockpile Topographic Survey to be tied into the Preliminary Site Plan provided by Novus Reb. Site control was established with Leica SmartNet RTN (GPS). Ground shots were collected using a robotic total station and RTK.</p>			
6/22 – Ongoing	<p>The Waters at Millerville <i>Party Chief.</i> Prime Consultant. This project included professional land surveying services related to the construction stakeout of the proposed improvements at The Waters at Millerville apartment complex in Baton Rouge. This included extensive construction stakeout, all required elevation certificates for every building within the project limits, and the development of drainage and sewer as-built drawings.</p>			
1/22 – Ongoing	<p>The Waters at Heritage <i>Party Chief.</i> Prime Consultant. This project involved providing professional land surveying services for the development of the Waters at Heritage subdivision in Gonzales, including a partial Topographic Survey, construction staking, and LOMR-F application.</p>			
12/21 – 2/22	<p>Materra/Woman’s Hospital/Airline <i>Assistant Party Chief.</i> Sub to Stantec Consulting Services, Inc. This project involved a Topographic Survey and a Re-Subdivision Map.</p>			

<p>9/21 – Ongoing</p>	<p>City-Parish Project No. 20-EN-HC-0027 – MoveBR – Sherwood Forest Boulevard Multi-Use Path <i>Assistant Party Chief.</i> This project included preliminary engineering services encompassing a Design Study, Corridor Survey, and Preliminary Plans as well as a complete set of Final Plans. A Topographic Survey and engineering design were completed to improve pedestrian and bicycle mobility along S. Sherwood Forest by adding a multi-use path along the west side of the roadway.</p>
<p>1/21 – Ongoing</p>	<p>City Project No. 20-TS-HC-0075 – 20-TS-HC-0080 – MoveBR Synchronization and Communication Signal Rebuilds – Group 2 <i>Assistant Party Chief.</i> This project involved a Topographic Survey and Right-of-Way maps for six intersections.</p>
<p>9/20 – Ongoing</p>	<p>City-Parish Project No. 12-CS-HC-0015 – MoveBR Perkins Road, Siegen to Pecue <i>Assistant Party Chief.</i> This project involved a Topographic Survey and Right-of-Way maps for Perkins Road from Siegen Lane to Pecue Lane.</p>
<p>9/20 – Ongoing</p>	<p>City-Parish Project No. 20-EN-HC-0026 – MoveBR – S. Sherwood Forest Boulevard Sidewalks <i>Assistant Party Chief.</i> This project included preliminary engineering services encompassing a Design Study, Corridor Survey, and Preliminary Plans as well as a complete set of Final Plans.</p>

17. Firm Experience:

PROJECT NO. 1			
Firm name	Meyer Engineers, Ltd.	Past Performance Evaluation Discipline(s)*	** Road
Project name	Washington Parish Sidewalks (Segment B & C)	Firm responsibility (prime or sub?)	Prime
Project number	State Project No. H.011835	Owner's name	Washington Parish
Project location	Washington Parish	Owner's Project Manager	Mr. Ken Wheat
Owner's address, phone, email	909 Pearl Street, Franklinton, LA 70438; 985.335.1312; kwheat@wpgov.org		
Services commenced by this firm (mm/yy)	01/16	Total consultant contract cost (\$1,000's)	\$55
Services completed by this firm (mm/yy)	07/19	Cost of consultant services provided by this firm (\$1,000's)	\$42

Describe the project including the firm's role and members involved. (Highlight staff to be used in this proposal.)

Meyer Engineers, Ltd. (Meyer) designed and provided Construction Engineering and Inspection for the Washington Parish Sidewalk Project in Franklinton, Louisiana.

This Transportation Alternatives Program (TAP) project consisted of 4,000 linear feet of 6-foot-wide decorative concrete sidewalks along Cleveland Street, Main Street (LA 25), Pearl Street and Jackson Street.



Work also included concrete curbs, drainage, striping, and ADA ramps. The sidewalks provide a non-motorized transportation link in the community and will tie into the Safe Routes to School project around the Franklinton Junior High School. Future phases to extend the path along Main Street (LA 25) and along Boat Ramp Road are in the conceptual design phase. The project provided connectivity between residential neighborhoods and established commercial areas and government services.

Meyer provided engineering and inspection services to include coordinating with the Entity and the District, maintained field records and prepared monthly pay estimates and progress reports in DOTD's Site Manager. Meyer coordinated with DOTD as well as Washington Parish.

Team Members: Richard Meyer, P.E. / David Dupre, P.E. / Mark A. Schutt, P.E.
100% of the work for this project is performed in Louisiana.

PROJECT NO. 2

Firm name	<i>Meyer Engineers, Ltd.</i>		Past Performance Evaluation Discipline(s)*	** Road
Project name	<i>Lafitte Sidewalks Phase 1 & 2</i>		Firm responsibility (prime or sub?)	<i>Prime</i>
Project number	<i>State Project No. H.002263 & H.009753</i>	Owner's name	<i>Town of Jean Lafitte</i>	
Project location	<i>Jefferson Parish</i>		Owner's Project Manager	<i>Ms. Nicole Cooper</i>
Owner's address, phone, email	<i>2654 Jean Lafitte Boulevard, Lafitte, LA 70067; 504.689.7801; ncooper@townofjeanlafitte.com</i>			
Services commenced by this firm (mm/yy)	<i>11/14 (Ph. 1) 05/18 (Ph. 2)</i>	Total consultant contract cost (\$1,000's)	<i>\$217</i>	
Services completed by this firm (mm/yy)	<i>09/19 (Ph. 1) 07/20 (Ph. 2)</i>	Cost of consultant services provided by this firm (\$1,000's)	<i>\$184</i>	

Describe the project including the firm's role and members involved. (Highlight staff to be used in this proposal.)

Meyer Engineers, Ltd. (Meyer) provided **design**, construction engineering and resident inspection for the Lafitte Sidewalk Projects Phase 1 & 2 in Lafitte, Louisiana.

Phase 1 consisted of **1,100 linear feet of 5-foot-wide concrete sidewalks** along Treasure Street. Phase 2 consisted of **1,600 linear feet of 5' and 8' wide concrete sidewalk** along Treasure Street and Church Street and LA 302.

The work also included landscaping, curbs, drainage, **striping**, and **ADA ramps**. The **sidewalks** provide a **non-motorized transportation link** in the community and connect to the Town Hall, Senior Center, Post Office, and Fisher School. A future phase to extend the path along residential area of LA 45 is in the conceptual design phase.

The projects **provided connectivity** between residential neighborhoods and established commercial areas and government services. These projects were funded in part by **DOTD through the Transportation Alternatives Program (TAP)**. Meyer provided **engineering and inspection services** to include **coordinating with** the Entity and **the District**, maintained field records and prepared monthly pay estimates and progress reports in **DOTD's Site Manager**. **Meyer coordinated with DOTD** as well as Jefferson Parish.

Team Members: Richard Meyer, P.E. / David Dupre, P.E. / Ann Theriot, P.E. / Randy Oustalet, P.E. / Justin Bosarge
100% of the work for this project was performed in Louisiana.



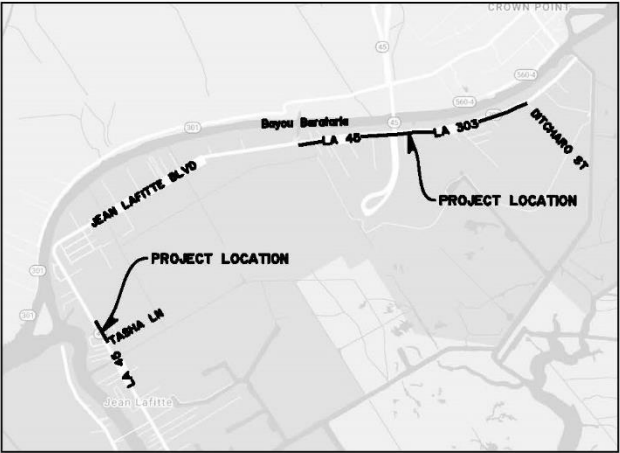
PROJECT NO. 3			
Firm name	Meyer Engineers, Ltd.	Past Performance Evaluation Discipline(s)*	** Road
Project name	LA 45 / LA 303 Rosethorne Path (Lafitte)	Firm responsibility (prime or sub?)	Prime
Project number	State Project No. H.013365	Owner's name	Town of Jean Lafitte
Project location	Jefferson Parish	Owner's Project Manager	Mr. Jeff Adam
Owner's address, phone, email	2654 Jean Lafitte Boulevard, Lafitte, LA 70067; 504.689.2208; jadam@townofjeanlafitte.com		
Services commenced by this firm (mm/yy)	05/18	Total consultant contract cost (\$1,000's)	\$128
Services completed by this firm (mm/yy)	On-Going	Cost of consultant services provided by this firm (\$1,000's)	\$128

Describe the project including the firm's role and members involved. (Highlight staff to be used in this proposal.)

Meyer Engineers, Ltd. (Meyer) completed the design of a **concrete sidewalk** in upper Lafitte. The project is a LADOTD **Transportation Alternatives Project (TAP)**. The construction scope of the project includes **7,700 linear feet of 6' wide sidewalk** along an existing roadway.

One of the challenges during design was crossing existing drop inlets with the sidewalk. Drop inlets are not typically ADA compliant, but any drop inlet which fell within the footprint of the path was required to be compliant. Meyer created a design to modify the existing catch basins to bring them into compliance.

Additional challenges on this project included navigating the sidewalk around existing obstacles in the narrow right-of-way, designing drainage improvements in Lafitte's low lying land, and coordinating with other local drainage and flood control projects by others in the same region. Meyer will be providing bidding and construction administration services for the project.



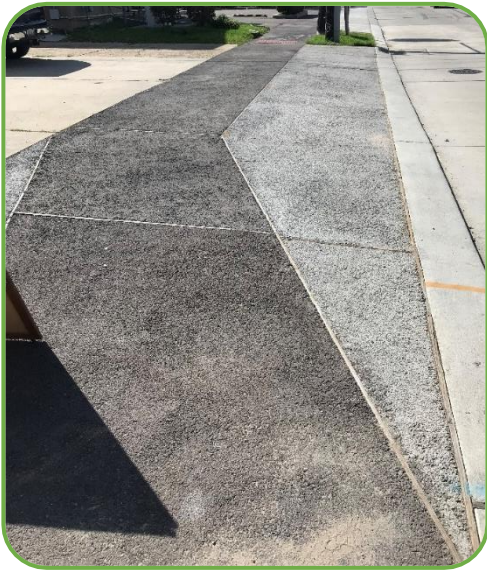
Team Members: Richard Meyer, P.E. / David Dupre, P.E. / Ann Theriot, P.E.
 100% of the work for this project was performed in Louisiana.

PROJECT NO. 4

Firm name	Meyer Engineers, Ltd.		Past Performance Evaluation Discipline(s)*	** Road
Project name	18th Street / Edenborn Avenue Drainage Improvements		Firm responsibility (prime or sub?)	Prime
Project number		Owner's name	Jefferson Parish Engineering Department	
Project location	Jefferson Parish		Owner's Project Manager	Mr. Mark Drewes
Owner's address, phone, email	1221 Elmwood Park Boulevard, Ste. 802, Jefferson, LA 70123; 504.736.6505; Mdrewes@jeffparish.net			
Services commenced by this firm (mm/yy)	03/12	Total consultant contract cost (\$1,000's)	\$489	
Services completed by this firm (mm/yy)	07/17	Cost of consultant services provided by this firm (\$1,000's)	\$489	

Describe the project including the firm's role and members involved. (Highlight staff to be used in this proposal.)

Meyer Engineers, Ltd. (Meyer) completed the design, construction administration, and inspection for drainage improvements and beautification on 18th Street and Edenborn Avenue. The project limits were along 18th Street and Edenborn Avenue between the 18th Street and W. Esplanade Canal in the heart of the Metairie Central Business District (formerly Fat City). As part of the Fat City Redevelopment Plan, a future vision included a vibrant, mixed-use neighborhood with a stable residential base, a pedestrian oriented core centered on 18th Street, and compatible transitions between the mixed-use core, residential areas, and heavy commercial areas.



The drainage, roadway, and beautification project has provided a catalyst for this Redevelopment Plan which has spurred an improved quality of life with future economic growth in the Metairie CBD. The project consisted of splitting/diverting storm water from the Veterans Boulevard Canal No. 3 to W. Esplanade Canal No. 2. Approximately 1,300' of subsurface drainage was installed along 18th Street and approximately 2,200' of subsurface drainage along Edenborn Avenue upgraded. In addition to the storm water improvements, the existing 18th Street concrete roadway was completely replaced along with decorative stamped-colored sidewalks for pedestrian use. Phase 2 of the project included 72-inch and 84-inch reinforced concrete arch pipes installed along Edenborn Avenue toward the West Esplanade Canal No. 2 to relieve the severely undersized outfall pipes utilized to drain the 18th Street corridor. Also utilized as an enhanced environmentally friendly construction procedure was **pervious concrete sidewalk** to manage runoff. Part of the design consisted of the replacement of water and sewer lines while maintaining service of the existing utilities. Overhead telephone and cable lines were buried under ground and new taller steel poles were erected for the overhead electrical power lines. Pedestrian lights were construction. Construction Cost: \$7.2M (Both Phases)

Team Members: Richard Meyer, P.E. / David Dupre, P.E. / Jitendra C. Shah, P.E. / Eric Colwart, P.E.

100% of the work for this project was performed in Louisiana.

PROJECT NO. 5			
Firm name	<i>Meyer Engineers, Ltd.</i>	Past Performance Evaluation Discipline(s)*	** Road
Project name	<i>LA 25: Washington Parish Sidewalks Segment A</i>	Firm responsibility (prime or sub?)	<i>Prime</i>
Project number	<i>H.014913</i>	Owner's name	<i>Washington Parish</i>
Project location	<i>Washington Parish</i>	Owner's Project Manager	<i>Mr. Ken Wheat</i>
Owner's address, phone, email	<i>909 Pearl Street, Franklinton, LA 70438; 985.335.1312; kwheat@wpgov.org</i>		
Services commenced by this firm (mm/yy)	<i>01/22</i>	Total consultant contract cost (\$1,000's)	<i>\$112</i>
Services completed by this firm (mm/yy)	<i>On-Going</i>	Cost of consultant services provided by this firm (\$1,000's)	<i>\$103</i>

Describe the project including the firm's role and members involved. (Highlight staff to be used in this proposal.)

Meyer Engineers, Ltd. (Meyer) is designing and will provide Construction Engineering and Inspection for the LA 25: Washington Parish Sidewalks, Segment A project.

This Transportation Alternatives Program (TAP) project consists of approximately **3,200 LF of 5' wide decorative sidewalk** along Main Street (LA 25) and an estimated **1,500 LF of 7' wide decorative sidewalk** along Cleveland Street in Franklinton, Louisiana.

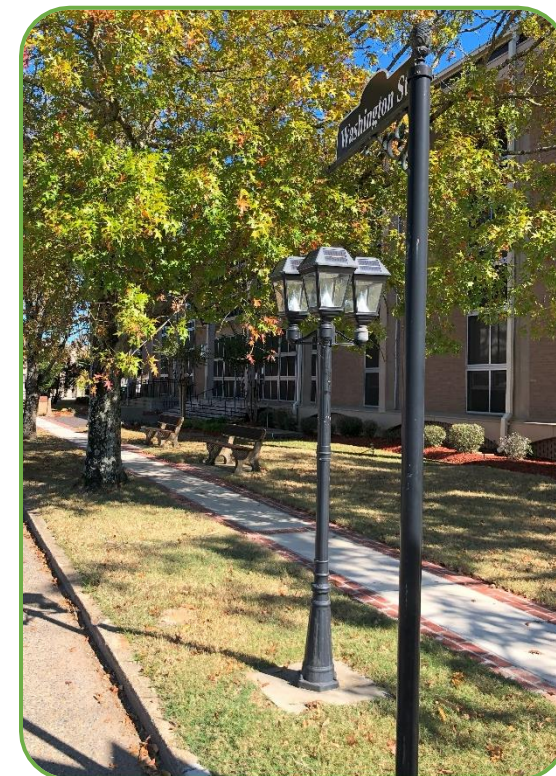
The work also includes concrete curbs, drainage, striping, and ADA ramps. The sidewalks provide a non-motorized transportation link in the community as well as tie into the Safe Routes to School Project around Franklinton Junior High School. It also connects to a previous sidewalk project in downtown Franklinton.

The project will provide connectivity between residential neighborhoods and established commercial areas, government services, and the Washington Parish Fairground.

Meyer will provide engineering and inspection services which include coordinating with Washington Parish and the District, maintaining field records and preparing monthly pay estimates and progress reports in DOTD's Site Manager.

Team Members: *Richard Meyer, P.E. / David Dupre, P.E. / Mark A. Schutt, P.E.*

100% of the work for this project was performed in Louisiana.



PROJECT NO. 6

FIRM NAME	SJB Group, LLC	PAST PERFORMANCE EVALUATION DISCIPLINE(S)	Survey, Right-of-Way, Other (Subsurface Utility Engineering)
PROJECT NAME	Morgan City Sidewalk and Shared Use Path Survey	FIRM RESPONSIBILITY (PRIME/SUB)	Sub to Digital Engineering
PROJECT NUMBER	H.013722.5	OWNER'S NAME	Digital Engineering
PROJECT LOCATION	St. Mary Parish	OWNER'S PROJECT MANAGER	Stephanie Turner, PE
OWNER'S ADDRESS PHONE NO. EMAIL	527 W. Esplanade Avenue, Suite 200, Kenner, LA 70065 (504) 468-6129 STurner@deii.net		
SERVICES COMMENCED BY THIS FIRM	4/23	TOTAL CONSULTANT CONTRACT COST (\$1,000'S)	\$1,500
SERVICES COMPLETED BY THIS FIRM	Ongoing	COST OF CONSULTANT SERVICES PROVIDED BY THIS FIRM (\$1,000'S)	\$111.7

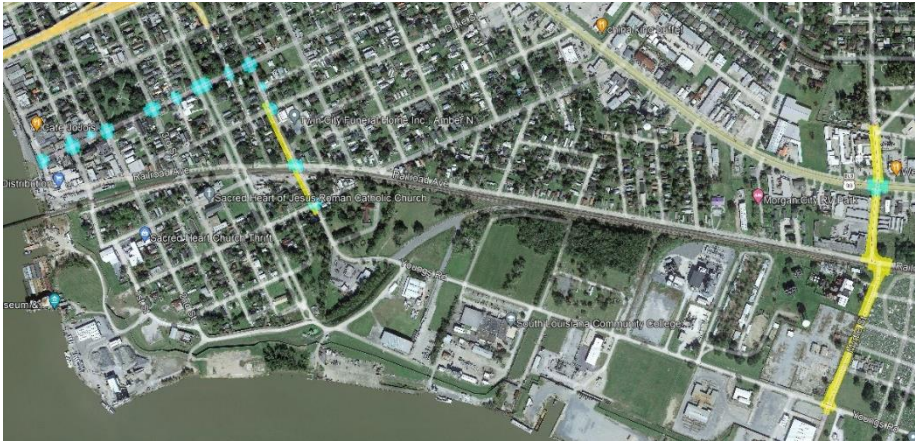
Firm's Role and Responsibilities: Topographic Survey, Right-of-Way, Subsurface Utility Engineering Quality Level "D", Subsurface Utility Engineering Quality Level "C"

Highlighted Team Members: C. Tim Brewer, RF, PS, PLS, RPLS, RPP | Colby Mire, PLS | Elvis Nguyen | Phillip Dowden | Tuesdie Savoy | Daniel Biggs

Project Description: This project included land surveying services and related services for the sidewalk improvement project for 14 intersections and approximately 3,000 feet of roadway in Morgan City.

The project limits included Everett Street from Front Street to 4th Street, 4th Street from Everett Street to Barrow Street, and Myrtle Street from Youngs Road to Auditorium Drive. Within the project limits, SJB Group performed a full Topographic Survey for all intersections and both sides of the roadway segments to include all utilities with depths, a complete inventory of drainage structures and pipe networks (type, size, length, and invert), vegetation, utility poles, types of pavement surfaces, utility meters, utility cleanouts, fences, traffic signals and signs, handicapped ramps and driveways, and railroad and railroad-related devices. Within all project limits, Right-of-Way Mapping was performed for all intersections and roadways.

The deliverables were developed in AutoCAD Civil 3D and presented in accordance with DOTD CADconform standards. All survey work was conducted in accordance with the Louisiana Department of Transportation EDSM for Engineering Surveys.



PROJECT NO. 7

FIRM NAME	SJB Group, LLC	PAST PERFORMANCE EVALUATION DISCIPLINE(S)	Survey
PROJECT NAME	ADA Transition Plan Update Phase 1 – District 3 Pilot Study	FIRM RESPONSIBILITY (PRIME/SUB)	Sub to Kimley Horn
PROJECT NUMBER	LA DOTD Contract No. 44-22830	OWNER'S NAME	Kimley Horn
PROJECT LOCATION	District 03	OWNER'S PROJECT MANAGER	Matt Pool, PE
OWNER'S ADDRESS PHONE NO. EMAIL	801 Cherry St, Suite 1300, Unit 11, Fort Worth, TX 76102 (817) 339-2251 matt.pool@kimley-horn.com		
SERVICES COMMENCED BY THIS FIRM	1/23	TOTAL CONSULTANT CONTRACT COST (\$1,000'S)	\$68.3
SERVICES COMPLETED BY THIS FIRM	Ongoing	COST OF CONSULTANT SERVICES PROVIDED BY THIS FIRM (\$1,000'S)	\$68.3

Firm's Role and Responsibilities: Topographic Survey, Mobile LiDAR Scanning

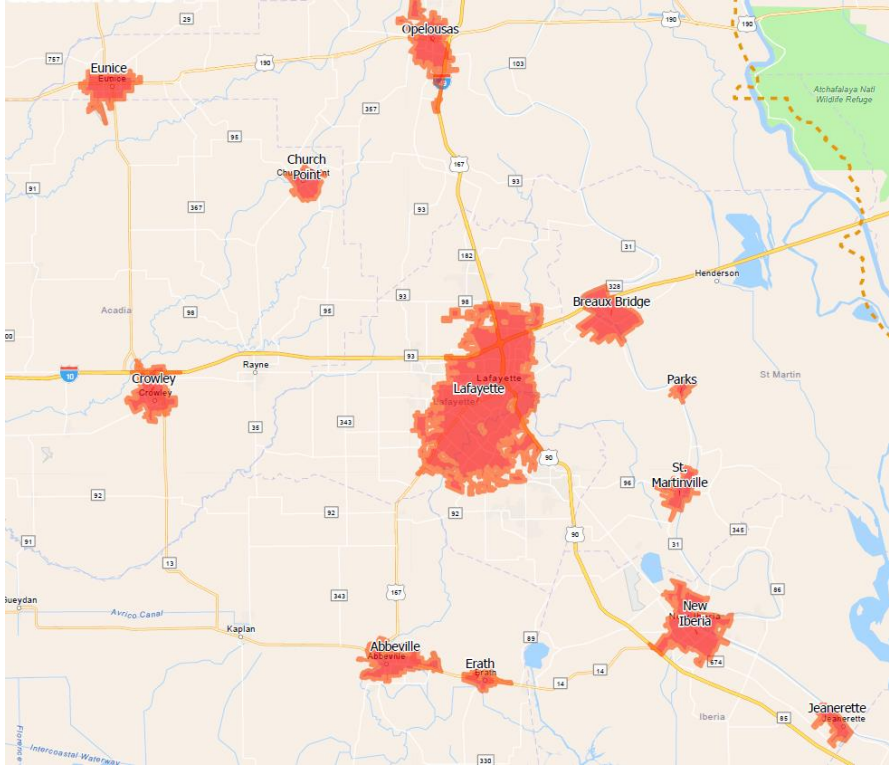
Highlighted Team Members: C. Tim Brewer, RF, PS, PLS, RPLS, RPP | Matthew Estopinal, PE, PLS | Phillip Dowden | Elvis Nguyen

Project Description: This project involved a Topographic Survey to allow LA DOTD to perform an updated self-evaluation of the existing Transition Plan under Title II of the Americans with Disabilities Act (ADA). This applied to select public Right-of-Ways, phased in by DOTD districts. The Pilot Study for this project includes the services required for LA DOTD to perform a self-evaluation of all sidewalks, traffic signals, bus stops, buildings, parking, rest areas, mixed-use trails, and linkages to transit.

SJB Group gathered LiDAR data and associated imagery along 30 linear miles of sidewalks on DOTD roadways, allowing for the measurement of cross-slope and running-slope of sidewalks in the project limits. This LiDAR data was classified and processed into a point cloud using standard ASPRS LiDAR classifications with Certainty 3D TopoDOT.

The software used to develop the deliverables for this project included Trimble Business Center (TBC), POSpac MMS, TopoDOT, OpenRoads Designer, LadybugCapPro, IrfanView 64, and Quick Terrain Modeler.

The equipment used for this project included a Trimble MX50 system with all tertiary equipment, such as DMI, Ladybug, and Leica Base Positioning.



PROJECT NO. 8

FIRM NAME	SJB Group, LLC	PAST PERFORMANCE EVALUATION DISCIPLINE(S)	Survey
PROJECT NAME	LA 3021: Dual Turn Lanes @ LA 39	FIRM RESPONSIBILITY (PRIME/SUB)	Prime
PROJECT NUMBER	LA DOTD Project No. H.014752.5	OWNER'S NAME	LA DOTD
PROJECT LOCATION	Orleans Parish	OWNER'S PROJECT MANAGER	Barrett Smith
OWNER'S ADDRESS PHONE NO. EMAIL	1201 Capitol Access Road, Baton Rouge, LA 70802 (225) 379-1101		
SERVICES COMMENCED BY THIS FIRM	2/22	TOTAL CONSULTANT CONTRACT COST (\$1,000'S)	\$122.1
SERVICES COMPLETED BY THIS FIRM	6/22	COST OF CONSULTANT SERVICES PROVIDED BY THIS FIRM (\$1,000'S)	\$122.1

Firm's Role and Responsibilities: Topographic Survey

Highlighted Team Members: Matthew Estopinal, PE, PLS | Colby Mire, PLS | Tuesdie Savoy | Elvis Nguyen | Phillip Dowden | J. Duke Koontz | C. Paul Young

Project Description: This project is located in Orleans Parish, Louisiana, at and around the intersection of LA 39 (N. Claiborne Ave.) and LA 46 (Elysian Fields Ave.) SJB Group was tasked through Retainer Contract No. 44-17711 to provide surveying services.

This project began at the intersection of LA 46 and Urquhart St. and proceeded north along LA 46 for 0.43 miles to North Prieur Street. Side streets including North Claiborne Avenue and Frenchman were included in the Topographic Survey. The project limits encompass an urban area with numerous houses and businesses as well as an extensive underground drainage and sewer system. This project required a full Topographic Survey, including locating all utilities with depths, drainage, and finish floor elevations of buildings within survey limits. This project was completed in accordance with the LA DOTD Location and Survey Manual and all current accepted Location and Survey Automation procedures.



18. Approach and Methodology:

The *Meyer Team (Meyer)* understands the scope for the entity contract for the Doucet Road Sidewalks Project in Lafayette Parish. The project limits are on Doucet from near Mayard Drive to W. Bayou Parkway. This contract will be used to perform engineering and related services on pre-construction activities. Services include surveying, preliminary plans, final plans, and construction support. *Meyer has project managers, staff, and resources to take on this project and complete it on a fast paced schedule.*

For Meyer’s Approach and Methodology, Meyer will use its vast experience on *Transportation Enhancement Projects (TEP), and Transportation Alternatives Projects (TAP)* that Meyer has completed over the last 14 years or are currently working on. These projects have included *multi-use paths, sidewalks, bike lanes, landscaping, and lighting.*

Meyer’s TEP or TAP projects completed include:

State Project #	Project Name
744-48-0005	St. John Miss. River Trail Ph. I
H.007559	St. John Miss. River Trail Ph. II
H.009770	St. John Mississippi River Trail Ph. III
H.009770	St. John Mississippi River Trail Ph. IV
744-52-0020	Tammany Trace Tunnel
H.010184	LA 59: Curve Realign and Tunnel at Trace
H.013525	St. Bernard Parish 40 Arpent Trail, Phase 1
H.002263	Lafitte Sidewalks – Phase 1
H.009753	Lafitte Sidewalks – Phase 2

H.0110835	Washington Parish Sidewalks, Segment B & C
744-52-0023	Jackson Avenue Bike Path
H.011855	Mandeville: West Causeway Approach Pathway
H.013365	LA 45/LA 303 Rosethorne Path (Lafitte)
H.011857	Wisner Shared Use Path Extension

Meyer TAP projects currently under design include:

State Project #	Project Name
H.014913	Washington Parish Sidewalks, Segment A
H.014736	St. John West Bank Mississippi River Trail Phase 2
H.014939	Brown Avenue Multi-Use Path (Jefferson Parish)

Design Approach

The approach to this project will be a culmination of years of experience, local knowledge, extensive observations, research on the latest and greatest innovations, technically sound analysis, and stakeholder engagement.

The Kick-off meeting is a critical opportunity to set the stage for successful project completion. This is the first chance to make valuable connections with stakeholders and learn about important history, intricate details specific to the local community, existing priorities, unknowns needing further investigation and potential limitations/challenges that need to be overcome. This is also the time to examine the schedule in detail, the roles and responsibilities of all involved as well as the communication protocol.

The Meyer team is aware of the importance of the Kick-off meeting and committed to it being an effective and efficient use of the stakeholders’ valuable time.

Once the Contract is executed between Meyer and the Lafayette Consolidated Government, and a Notice to Proceed (NTP) is issued, work may include the following steps:

Project Kickoff:

- ✿ Conduct Kickoff Meeting/Site Visit with **LPA and DOTD**. Determine feasibility of the project, constructability, and right-of-way issues.
- ✿ Request background information, such as Stage 0 Reports, Traffic Data, **bike/pedestrian Master Plans**, as-builts, utility information, and typical section (or geotechnical analysis). Determine the approximate right-of-way.
- ✿ Determine the required level of environmental clearance.
- ✿ Prepare and distribute minutes from the meeting.
- ✿ **The existing right-of-way (R/W) appears limited between the edge of the road and the existing R/W line. It will be critically important to determine the existing R/W, as per our experience, it is typically not a feasible option to acquire R/W on these types of projects.** Once the approximate R/W is established, an investigation can begin on dealing with **obstructions that will need to be addressed**. Some possible **obstructions** or conflicts with the proposed sidewalk include:

- ✿ **Parking Lots**
- ✿ **Fences**

- ✦ **Shrubs**
- ✦ **Power Poles**
- ✦ **Trees, including a “significant” live oak.**
- ✦ **Ditches/Swales**
- ✦ **Backflow Preventor**
- ✦ **Telephone Pedestals**
- ✦ **Mailboxes**

Options to resolve issues during design include:

- ✦ **Work around the utilities** to minimize complexities.
- ✦ **Add a curb and gutter** (there is an existing curb and gutter on the south eastern portion of the project).
- ✦ Have the conflicting utilities **relocate their lines.**
- ✦ If the **parking lots** are a problem, the parking lots **could be reconfigured for angled parking** and a one way driveway.

Topographic Survey:

SJB Group, LLC will conduct topographic surveying for this IDIQ contract. SJB Group personnel are thoroughly familiar with the topographic surveying requirements in the LA DOTD’s Location and Survey Manual and Addendum “A”. This familiarity and



Possible Parking lot encroaching in R/W

experience has been gained from many years of completing topographic surveying task orders through IDIQ contracts with the Location and Survey section. SJB Group will provide a thorough, **quality survey in Microstation and InRoads**, and certified in CADConform, to LA DOTD Standards. SJB Group has the capacity to complete project tasks in accordance with the project schedule and budget, and in a safe manner. All SJB Group field personnel are required to have current Traffic Control certifications which includes, at a minimum, Traffic Control Supervisor and Traffic Control Technician for the Land Surveyor Professional of Record and all Party Chiefs, and the ATSSA Flagger certification for Land Surveyors, Party Chiefs, Instrument Men and Rodmen. The SJB Group Project Manager will assign tasks to personnel for **quality, efficiency, and based on prior work experience.**

Preliminary Plans:

Meyer is **very familiar with DOTD processes and procedures** as shown on our project experience. Meyer will follow DOTD’s Road Design Manual for this contract. Meyer will also use DOTD’s Design Criteria Guidelines, the AASHTO “Green Book”, and the DOTD Hydraulic Manual. Meyer will complete **Quality Reviews prior to each submittal.**

✦ **60% Preliminary Plan Submittal:**

- Design **typical sections** in accordance with design criteria.
- Design the **layout of the path.**
- If necessary, design the drainage in accordance with DOTD’s Hydraulic Manual.

- The 60% Submittal shall include the Title Sheet, Typical Sections, Plan and Profile Sheets, hydraulic design, cross sections, and utility relocation recommendations.

✦ **95% Preliminary Plan Submittal (Plan-in-Hand):**

- Incorporate/resolve comments from the 60% Submittal.
- Identify the limits of construction and required right-of-way lines.
- The **95% Submittal** shall include the Title Sheet, Typical Sections, Plan and Profile Sheets, geometric alignment and details, hydraulic design, cross sections, utility relocation recommendations, sequence of construction and construction signing, summary of estimated quantities sheet (to identify the pay items), and the QA/QC checklist.
- Develop the Transportation Management Plan including traffic control details and plan.
- Assist the DOTD Project Manager in scheduling and conducting the Plan-in-Hand Meeting.
- Conduct the **Plan-in-Hand Meeting. Invite effected utility companies** to address problems and alert them of the schedule.
- Assist in conducting a Public Meeting (if needed).

❖ **100% Preliminary Plan Submittal (If Necessary):**

- Incorporate/resolve Plan-in-Hand comments.
- Complete the cost estimate.
- Complete permit sketches.



Utilities and Drain Inlet Near Road

Final Plan Submittal:

❖ **If necessary, 60% Final Plan Submittal:** Include the *summary sheets*, joint layouts, graphic grades, and *traffic signal design*. (Confirm with Project Manager if this submittal is necessary.)

❖ **95% Final Plan Submittal (Advance Check Prints):** Include the QA/QC checklist, and the Constructability Review Form.

❖ **98% and 100% Final Plan Submittal:** Include the *final cost estimate*, special provisions, and stamped final plans.

Construction Support:

Meyer understands that CE&I will be performed by DOTD or another consultant. Meyer will provide Construction Support, as needed. Which may include addressing *Requests for Information* (RFI's) and *plan revisions*. Meyer will approve RFI's within forty-eight hours and complete plan revisions within seven days. Meyer will review *shop drawings*.



Significant Live Oak Tree on Doucet

	PROJECT SCHEDULE														
	MONTHS														
	1	2	3	4	5	6	7	8	9	10	11	12	13	14	15
Kickoff Meeting															
Topographic Survey															
60% Preliminary Plans															
95% Preliminary Plans															
Plan in Hand Meeting															
100% Preliminary Plans (If Necessary)															
95% Final Plans															
98% Final Plans															
100% Final Plans															
Utility Agreements (If Necessary)															

19. Workload:

Firm(s) ALL FIRMS MUST BE REPRESENTED IN THIS TABLE	Past Performance Evaluation Discipline(s) *	Contract Number and State Project Number	Project Name	Remaining Unpaid Balance**
Meyer Engineers, Ltd.				
<i>Meyer Engineers, Ltd.</i>	<i>CE&I/OV</i>	<i>#4400017430 H.001498</i>	<i>LA 24 & LA 316: Company Canal Bridge (CE&I)</i>	<i>\$197,622</i>
<i>Meyer Engineers, Ltd.</i>	<i>Road</i>	<i>#4400013796 H.004727</i>	<i>Howard Avenue Extension (Loyola Avenue to LaSalle Street</i>	<i>\$19,782</i>
<i>Meyer Engineers, Ltd.</i>	<i>CE&I/OV</i>	<i>#4400021186 H.013520</i>	<i>Barringer Drive Sidewalks</i>	<i>\$38,498.75</i>
<i>Meyer Engineers, Ltd.</i>	<i>Road</i>	<i>#4400023075 H.013522</i>	<i>S. Lewis Street Widening</i>	<i>\$226,736</i>
<i>Meyer Engineers, Ltd.</i>	<i>CE&I/OV</i>	<i>#4400024988 H.006457.6</i>	<i>Roundabout @ PR 929 and Parker Road</i>	<i>\$117,250</i>
<i>Meyer Engineers, Ltd.</i>	<i>CE&I/OV</i>	<i>#4400025412 H.006459.6</i>	<i>Roundabout @ Churchpoint Road & Roddy Road</i>	<i>\$265,052</i>
<i>Meyer Engineers, Ltd.</i>	<i>CE&I/OV</i>	<i>#4400025702 H.013813.6</i>	<i>Vintage Drive Multi Use Path: Power - Wilson</i>	<i>\$196,036</i>
SJB Group, LLC				
<i>SJB Group, LLC</i>	<i>CPM</i>	<i>44-17485 H.002980.6</i>	<i>I-10 Overpass Over US 165 & Missouri Pacific Railroad – Calcasieu and Jefferson Davis Parish</i>	<i>\$69,592</i>
<i>SJB Group, LLC</i>	<i>CPM</i>	<i>44-17485 H.003184.6</i>	<i>I-10 Texas State Line – East of Coone Guillory – Calcasieu Parish</i>	<i>\$109,249</i>
<i>SJB Group, LLC</i>	<i>CPM</i>	<i>44-17485 H.012588.6</i>	<i>I-10: Atchafalaya Basin Bridge - West Baton Rouge P/L - District 61, Iberville Parish</i>	<i>\$22,929</i>
<i>SJB Group, LLC</i>	<i>CPM</i>	<i>44-17485 H.009620.6-1</i>	<i>I-10: West of LA 108 to I-210 Interchange – Calcasieu Parish</i>	<i>\$0</i>
<i>SJB Group, LLC</i>	<i>CPM</i>	<i>44-17485 H.010018</i>	<i>I-10: NO East Drain Canal Bridge Replace - District 02, Orleans Parish</i>	<i>\$25,261</i>
<i>SJB Group, LLC</i>	<i>CPM</i>	<i>44-17485 H.004634.6</i>	<i>Juban Road Widening (I-12 to US 190) – Livingston Parish</i>	<i>\$15,031</i>
<i>SJB Group, LLC</i>	<i>CPM</i>	<i>44-17485 H.009487.6</i>	<i>LA 1 Atchafalaya Bridge Clean & Paint – District 08, Avoyelles Parish</i>	<i>\$84,096</i>
<i>SJB Group, LLC</i>	<i>CPM</i>	<i>44-17485 H.001234.6</i>	<i>LA 1: Port Allen Canal Bridge Replacement (Phase 1) (HBI) – West Baton Rouge Parish</i>	<i>\$42,937</i>

<i>SJB Group, LLC</i>	<i>CPM</i>	<i>44-17485 H.002375</i>	<i>LA 16 Amite River Bridge near French Settlement – Livingston Parish</i>	<i>\$25,869</i>
<i>SJB Group, LLC</i>	<i>CPM</i>	<i>44-17485 H.001820.6</i>	<i>LA 485: Bridges Near Allen - District 08, Natchitoches Parish</i>	<i>\$22,791</i>
<i>SJB Group, LLC</i>	<i>CPM</i>	<i>44-17485 H.002424</i>	<i>LA 70 Sunshine Bridge - LA 22 - District 61, Ascension and St. James Parish</i>	<i>\$52,116</i>
<i>SJB Group, LLC</i>	<i>CPM</i>	<i>44-4351 H.011220.6</i>	<i>NO CBD2 Carrollton-Lafitte Ave - District 02, Orleans Parish</i>	<i>\$16,955</i>
<i>SJB Group, LLC</i>	<i>CPM</i>	<i>44-17485 H.013579.6</i>	<i>Pecue Lane/I-10 Interchange Phase 2 - District 61, East Baton Rouge Parish</i>	<i>\$2,175</i>
<i>SJB Group, LLC</i>	<i>CPM</i>	<i>44-17485 H.003047.6</i>	<i>Pecue Lane/I-10 Interchange Phase III - District 61, East Baton Rouge Parish</i>	<i>\$69,749</i>
<i>SJB Group, LLC</i>	<i>CPM</i>	<i>44-17485 H.000169.6</i>	<i>Union Pacific Railroad Bridge at Sicard - District 05, Ouachita Parish</i>	<i>\$22,283</i>
<i>SJB Group, LLC</i>	<i>CPM</i>	<i>44-17485 H.000665.6</i>	<i>Union Pacific Railroad Overpass near Bonita (HBI) - District 05, Morehouse Parish</i>	<i>\$61,113</i>
<i>SJB Group, LLC</i>	<i>CPM</i>	<i>44-17485 H.001344.6</i>	<i>US 190: LA 437 to US 190 BUS (Phase 1) – St. Tammany Parish</i>	<i>\$28,101</i>
<i>SJB Group, LLC</i>	<i>CPM</i>	<i>44-17485 H.012876.6</i>	<i>US 90Z (I-10 - Magnolia Street) - District 02, Orleans Parish</i>	<i>\$20,707</i>
<i>SJB Group, LLC</i>	<i>CPM</i>	<i>44-4351 H.012901.6-1</i>	<i>US90Z (Magnolia-Bodenger)</i>	<i>\$14,752</i>
<i>SJB Group, LLC</i>	<i>Other (DBE)</i>	<i>44-26952</i>	<i>LA DBE Supportive Services 2023-2026</i>	<i>\$250,386</i>
<i>Burk-Kleinpeter (Prime) SJB Group, LLC (Sub)</i>	<i>Other (Engineering)</i>	<i>44-17597 H.013982</i>	<i>Rural Bridge Replacement Initiative - Districts 03, 07, 61, and 62 LA 10 Spur, LA 402 Bridges Near Greensburg – St. Helena Parish</i>	<i>\$33,280</i>
<i>Burk-Kleinpeter (Prime) SJB Group, LLC (Sub)</i>	<i>Right-of-Way</i>	<i>44-17597 H.013996</i>	<i>Rural Bridge Replacement Initiative - Districts 03, 07, 61, and 62 LA 1074, LA 1075: Bridges Near Rio – St. Tammany and Washington Parish</i>	<i>\$1,088</i>
<i>Michael Baker International (Prime) SJB Group, LLC (Sub)</i>	<i>Other (SUE)</i>	<i>44-19379</i>	<i>LA 30: EBR PL - I-10 - Ascension and Iberville Parishes</i>	<i>\$2,904</i>
<i>SJB Group, LLC</i>	<i>Other (SUE)</i>	<i>44-19184 H.001820.6</i>	<i>LA 485 Bridges Near Allen Construction Inspection - Allen Parish</i>	<i>\$28,000</i>
<i>SJB Group, LLC</i>	<i>Other (SUE)</i>	<i>44-19184 H.001820</i>	<i>LA 485 Bridges Near Allen Waterline Investigation - Natchitoches Parish</i>	<i>\$15,000</i>
<i>SJB Group, LLC</i>	<i>Survey</i>	<i>44-16018 H.011310.5</i>	<i>Ford Street Extension - East Baton Rouge Parish</i>	<i>\$5,643</i>
<i>SJB Group, LLC</i>	<i>Survey</i>	<i>44-16018 H.004100</i>	<i>I-10: LA 415 to Essen on I-10 and I-12 ROW Revisions TO 52 - East Baton Rouge Parish</i>	<i>\$3,486</i>

Kimley Horn (Prime) SJB Group, LLC (Sub)	<i>Survey</i>	44-22830	Kimley Horn ADA Self-Evaluation	\$54,188
SJB Group, LLC	<i>Survey</i>	44-16018 H.012001.5	LA 339 Canal and Creek Bridges - Vermilion Parish	\$4,393
SJB Group, LLC	<i>Survey</i>	44-17711 H.012685.5	LA 385: Ryan Street Intersection Improvements – Calcasieu Parish	\$11,454
SJB Group, LLC	<i>Survey</i>	44-16018 H.002244.5	LA 56: Boudreaux Canal MB Replacement - Terrebonne Parish	\$14,891
Digital Engineering & Imaging (Prime) (SJB Group, LLC (Sub))	<i>Survey</i>	44-19870 H.013722.5	Morgan City Sidewalks and Shared Use Path Safe Routes to Public Places Program - St. Mary Parish	\$47,563
Burk-Kleinpeter (Prime) SJB Group, LLC (Sub)	<i>Survey</i>	44-17597 H.013984	Rural Bridge Replacement Initiative - Districts 03, 07, 61, and 62 LA 16: Bridges (Isabel to Sun) – St. Tammany and Washington Parish	\$6,456

20. Certifications/Licenses:

If the advertisement requires submission of licenses and/or certificates, include them here. **Otherwise, leave this section blank.**

21. QA/QC Plan:

N/A

22. Sub-consultant Information:

Firm Name (Name must match as registered with Louisiana's Secretary of State)	Address	Point of Contact and email address	Phone Number
<i>SJB Group, L.L.C.</i>	<i>8377 Picardy Avenue Baton Rouge, LA 70809</i>	<i>Matthew Estopinal, PE, PLS</i> <u>Matt.Estopinal@SJBGroup.com</u>	<i>225.769.3400</i>

23. Location:

N/A